



STOR-EDGE™ MEDICAL BASE CABINETS

Name:	
School/Organization:	
Dealer/Rep:	

Phone:	
E-mail:	
Sales Rep:	Quote:



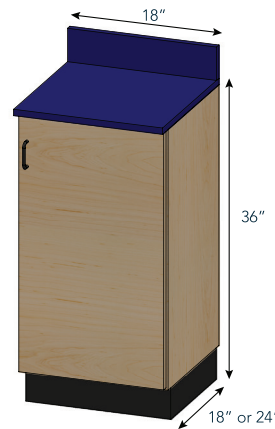
SEM CB-003-2D

STANDARD FEATURES:

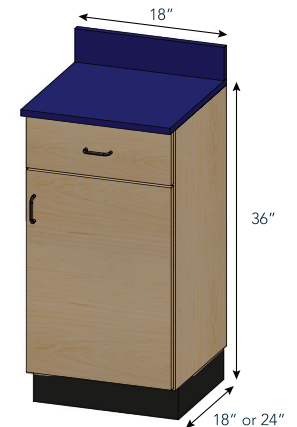
- Available in wood or laminate finishes
- (1) Adjustable shelf in each doored cabinet (not available in sink cabinets)
- 110° Euro hinges on doors
- Full extension drawers glides
- Black wire pull handles
- Right or left hinges available on single door cabinets
- High pressure laminate countertop with backsplash
- Black toe-kick plate
- Cabinets ship individually without countertop installed. Assembly and installation required on site.

CABINET CONFIGURATIONS:

<input type="radio"/> SEMCB-001 • 18"W x 18"D x 36"H • (1) Adjustable Shelf • (1) Hinged Door QTY: <input type="radio"/> Right Hinged <input type="radio"/> Left Hinged
<input type="radio"/> SEMCB-002 • 18"W x 24"D x 36"H • (1) Adjustable Shelf • (1) Hinged Door QTY: <input type="radio"/> Right Hinged <input type="radio"/> Left Hinged



<input type="radio"/> SEMCB-001-1D • 18"W x 18"D x 36"H • (1) Adjustable Shelf • (1) Hinged Door • (1) 5.5" Drawer QTY: <input type="radio"/> Right Hinged <input type="radio"/> Left Hinged
<input type="radio"/> SEMCB-002-1D • 18"W x 24"D x 36"H • (1) Adjustable Shelf • (1) Hinged Door • (1) 5.5" Drawer QTY: <input type="radio"/> Right Hinged <input type="radio"/> Left Hinged

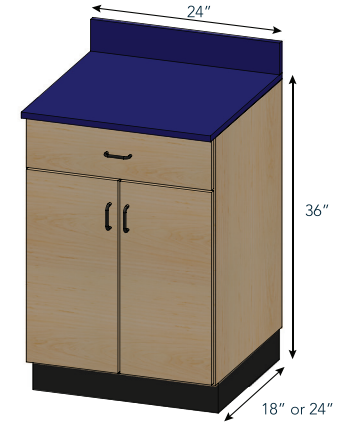


STOR-EDGE MEDICAL BASE CABINETS

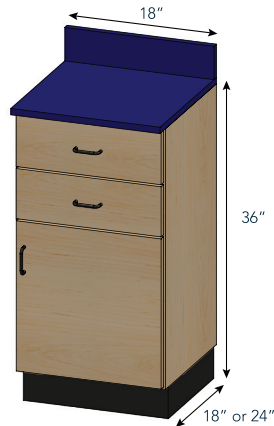
<input type="radio"/> SEMCB-003 <ul style="list-style-type: none"> • 24"W x 18"D x 36"H • (1) Adjustable Shelf • (2) Hinged Doors
QTY:
<input type="radio"/> SEMCB-004 <ul style="list-style-type: none"> • 24"W x 24"D x 36"H • (1) Adjustable Shelf • (2) Hinged Doors
QTY:



<input type="radio"/> SEMCB-003-1D <ul style="list-style-type: none"> • 24"W x 18"D x 36"H • (1) Adjustable Shelf • (1) Hinged Door • (1) 5.5" Drawer
QTY:
<input type="radio"/> SEMCB-004-1D <ul style="list-style-type: none"> • 24"W x 24"D x 36"H • (1) Adjustable Shelf • (1) Hinged Door • (1) 5.5" Drawer
QTY:



<input type="radio"/> SEMCB-001-2D <ul style="list-style-type: none"> • 18"W x 18"D x 36"H • (1) Adjustable Shelf • (1) Hinged Door • (2) 5.5" Drawers
QTY:
<input type="radio"/> Right Hinged <input type="radio"/> Left Hinged
<input type="radio"/> SEMCB-002-2D <ul style="list-style-type: none"> • 18"W x 24"D x 36"H • (1) Adjustable Shelf • (1) Hinged Door • (2) 5.5" Drawers
QTY:
<input type="radio"/> Right Hinged <input type="radio"/> Left Hinged



<input type="radio"/> SEMCB-003-2D <ul style="list-style-type: none"> • 24"W x 18"D x 36"H • (1) Adjustable Shelf • (2) Hinged Doors • (2) 5.5" Drawers
QTY:
<input type="radio"/> SEMCB-004-2D <ul style="list-style-type: none"> • 24"W x 24"D x 36"H • (1) Adjustable Shelf • (2) Hinged Doors • (2) 5.5" Drawers
QTY:





STOR-EDGE MEDICAL BASE CABINETS

- SEMCB-003-Sink
 - 24"W x 18"D x 36"H
 - (2) Hinged Doors
 - Sink Kit (Assembly Required)

QTY:

- SEMCB-004-Sink
 - 24"W x 24"D x 36"H
 - (2) Hinged Doors
 - Sink Kit (Assembly Required)

QTY:

- SEMCB-001-5D
 - 18"W x 18"D x 36"H
 - (5) 6" Drawers

QTY:

- SEMCB-002-5D
 - 18"W x 24"D x 36"H
 - (5) 6" Drawers

QTY:

- SEMCB-003-5D
 - 24"W x 18"D x 36"H
 - (5) 6" Drawers

QTY:

- SEMCB-004-5D
 - 24"W x 24"D x 36"H
 - (5) 6" Drawers

QTY:



- SEMCB-005
 - 30"W x 18"D x 36"H
 - "L" Corner Unit
 - (1) Adjustable Shelf
 - (1) Hinged Door

QTY:

- Right Hinged Left Hinged

- SEMCB-008
 - 36"W x 24"D x 36"H
 - "L" Corner Unit
 - (1) Adjustable Shelf
 - (1) Hinged Door

QTY:

- Right Hinged Left Hinged

- SEMCB-021
 - 30"W x 18"D x 36"H
 - Corner Unit
 - (1) Adjustable Shelf
 - (1) Hinged Door

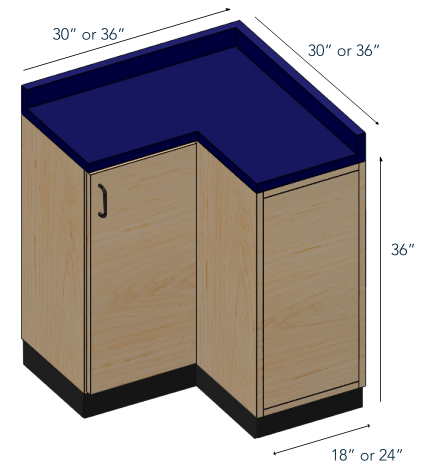
QTY:

- Right Hinged Left Hinged

- SEMCB-022
 - 36"W x 24"D x 36"H
 - Corner Unit
 - (1) Adjustable Shelf
 - (1) Hinged Door

QTY:

- Right Hinged Left Hinged





STOR-EDGE MEDICAL BASE CABINETS

OPTIONS:

- Lock1004 - Lock on Single Door
- Lock Double Door - Lock on Double Door
- Lock1001 - Lock on Drawer (Not Available with Flush Mount Handles)
- TSFO-FHDR - Flush Mount Handles on Drawers
- TSFO-FHD - Flush Mount Handles on Doors
- TSFO-FHSD - Flush Mount Handles - Single Door

CONTINUOUS RUN OPTIONS:

- Continuous Countertop
Please supply a floor plan/room layout showing cabinets.
- Continuous Toe-Kick
Black Laminate



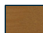
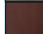
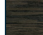
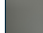

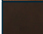

STANDARD WOOD COLORS:

-  Oak
-  Maple




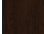
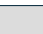
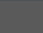


WOOD STAIN OPTIONS:

- MOD-Stain










STANDARD STAIN COLORS:

-  Warm Copper
-  Deep Garnet
-  Fossil Gray
-  Tungsten
-  Rustic Fall
-  Warm Caramel
-  Black Beauty
- Custom Wood Stain Color:

STANDARD LAMINATE COLORS:

-  Oak
-  Maple
-  Cherry Merlot
-  Espresso
-  Grey
-  Storm Grey
-  Harbor Grain
-  Black

STANDARD COUNTERTOP COLORS:

-  Brittany Blue
-  Navy Blue
-  Burgundy
-  North Sea Grey
-  Black
-  Royal Blue
-  Red
-  Hunter Green
-  Slate Grey

CUSTOM BRANDING:

- Decal Custom Small
Small Logo Decal
(6"W x 6"H) 
- Decal Custom Large
Large Logo Decal
(12"W x 12"H) 