



Name:		Phone:	
School/Organization:		E-mail:	
Dealer/Rep:		Sales Rep:	Quote:

STANDARD FEATURES:

- Load capacity: 750 lbs.
- 30"W x 78"L x 32"H
- Durable aluminum frame with textured powder coat finish with optional accent color
- 6" Pneumatic wheels
- Stow-away handle
- Lockable storage cabinet with access from both sides
- Marine grade plastic top
- Graphics package: includes (2) logo panels on top



PW4000-PRO



STANDARD TABLES:

<input type="radio"/> PW4000-PRO 30"W x 78"L x 32"H (Open) 34"W x 28"L x 32"H (Folded)
QTY:

OPTIONS:

<input type="radio"/> A2817-PRO - All Weather Cover (Black)
<input type="radio"/> A4487-PRO - Replacement Decals (Set of Two) (25"W x 25"H)

ALUMA ELITE
PRO PORTABLE WORKSTATIONS

STANDARD TOP COLORS:

<input type="radio"/> North Sea Gray
<input type="radio"/> Black
<input type="radio"/> White

STANDARD FRAME COLORS:

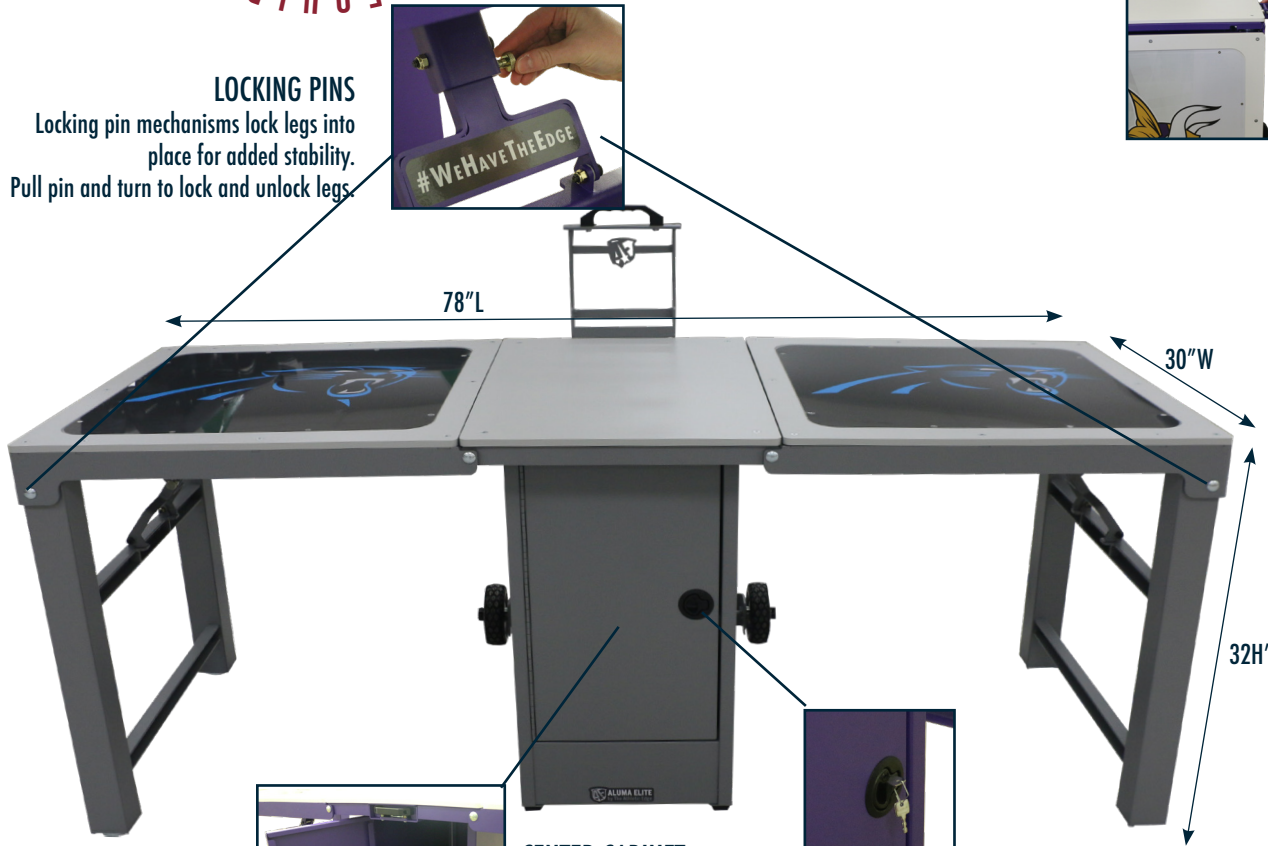
<input type="radio"/> Royal Blue	<input type="radio"/> Burgundy
<input type="radio"/> Navy Blue	<input type="radio"/> Green
<input type="radio"/> Red	<input type="radio"/> Forest Green
<input type="radio"/> White	<input type="radio"/> Purple
<input type="radio"/> Black	<input type="radio"/> Bright Blue
<input type="radio"/> Light Gray	<input type="radio"/> Brown
<input type="radio"/> Yellow	<input type="radio"/> Sky Blue
<input type="radio"/> Orange	<input type="radio"/> Charcoal

STANDARD ACCENT COLORS:

<input type="radio"/> Royal Blue	<input type="radio"/> Burgundy
<input type="radio"/> Navy Blue	<input type="radio"/> Green
<input type="radio"/> Red	<input type="radio"/> Forest Green
<input type="radio"/> White	<input type="radio"/> Purple
<input type="radio"/> Black	<input type="radio"/> Bright Blue
<input type="radio"/> Light Gray	<input type="radio"/> Brown
<input type="radio"/> Yellow	<input type="radio"/> Sky Blue
<input type="radio"/> Orange	<input type="radio"/> Charcoal



ALUMA ELITE PRO PORTABLE WORKSTATIONS



LOCKING PINS
Locking pin mechanisms lock legs into place for added stability. Pull pin and turn to lock and unlock legs.



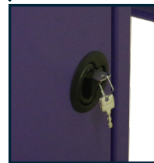
78" L

30" W

32" H



CENTER CABINET
Cabinet doors located on each side of cabinet allowing access from either side of workstation.

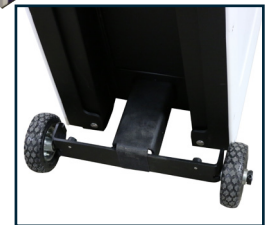


LOCK
Cabinet doors come equipped with lock for added security.

NOTES:



LOCKING HANDLE
Heavy-duty handle makes for easy mobility.



LOCKING WHEEL MECHANISM
Locking wheels hold the table in place and provide extra stability while open and in use or folded up and on the go.



ALUMA ELITE PRO PORTABLE WORKSTATIONS

SET-UP:



TAKE-DOWN:

