



SPA



FEATURED CASE STUDY P. 19

ATHLETIC TRAINING EQUIPMENT CATALOG

SAN JOSE SPARTANS

CONTENTS

1	ALUMA ELITE SERIES	4
2	HI-LO TREATMENT TABLES & CABINETS	18
3	TAPING STATIONS & SEATS	22
4	TREATMENT TABLES	24
5	TREATMENT CABINETS	30
6	CARTS & CABINETS	36
7	SIDELINE SOLUTIONS	48
8	ACCESSORIES	52

WHAT'S NEW THIS YEAR

2024 NEW ADDITIONS

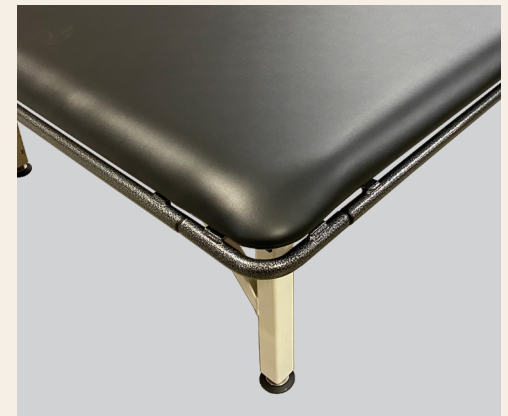
PAGE 4



Aluma Elite Pro Tilt Taping Station

- Load capacity: 500 lbs.
- Durable aluminum construction
- Tough powder coat finish

PAGE 21



Side Bumper Option

- Available on mat tables only
- Helps absorb impact
- Protects edge of cushion

PAGE 37



**Splint Carts
SR-017 & SR-018**

- 42”L x 27.5”W x 31” or 38”H
- Open storage with adjustable shelf
- Lockable vertical storage

PAGE 36



Strava Basic

- Heats in 25 minutes
- User sets time & temperature
- Visual timer

PAGE 36



Strava Smart

- UV-C Germicidal kill
- High-Heat sanitation cycle
- Digital touch interface

PAGE 37



**Aluma Elite
Splint Carts**

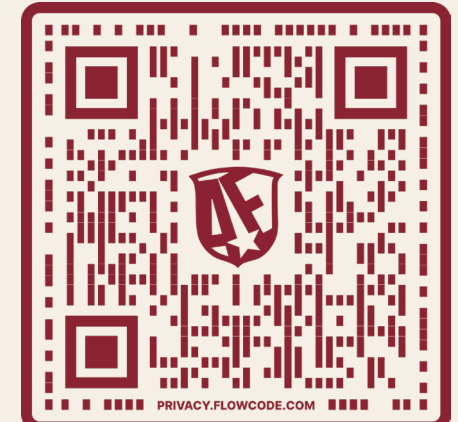
- Durable aluminum construction
- (4) Drawers with lock
- (1) Locking door

PAGE 50



**Hydration
Smartcart +**

- Auto priming pump
- (3) Locking doors
- Push button bottle dispensing



**Experience The Edge
Online**

ALUMA ELITE ENCLOSED TAPING STATIONS

PRO Enclosed Taping Station

- Load capacity: 500 lbs.
- Durable aluminum construction
- Tough powder coat finish
- Enclosed cabinet (1 drawer and 2 doors) on each seat
- 4 Drawer center cabinet with phenolic top
- Waste bin cutout on center cabinet, garbage can supplied
- 2" Semi-firm foam cushion
- Graphics package: includes (3) decals
- Ships as modular units (some assembly required)
- Tilt back cushion
- Armrests on both sides
- APROTLT2 Shown



NEW LARGER SIZE



Enclosed Taping Station

- Load capacity: 500 lbs.
- Durable aluminum construction
- Tough powder coat finish
- Enclosed cabinet (1 drawer and 2 doors) on each seat
- 4 Drawer center cabinet with phenolic top
- Waste bin cutout on center cabinet, garbage can supplied
- 2" Semi-firm foam cushion
- Rounded corners
- Graphics package: includes (3) decals
- Ships as modular units (some assembly required)
- Lockable Storage
- A4800 Shown with options

MULTIPLE CONFIGURATIONS



Taping Station

- Load capacity: 500 lbs.
- Durable aluminum construction
- Tough powder coat finish
- Cabinet with 3 drawer lockable storage and phenolic top
- Tape holder and shelf on each taping seat
- Waste bin cutout on center cabinet, garbage can supplied
- 2" Semi-firm foam cushion
- Rounded corners
- Graphics package: includes (1) school logo/name decal on each taping seat tape holder and on (1) cabinet drawer
- Ships as modular units (some assembly required)
- A4202 Shown

ALUMA ELITE TAPING STATION & TABLE

Taping Table

- Load capacity: 500 lbs.
- Durable aluminum construction
- Tough powder coat finish
- Tape holder for each end
- Graphics package: includes (1) school logo/name decal on each tape holder (1 on each end)
- 30" Wide seat cushion
- 2" Semi-firm foam cushion
- Rounded corners
- A4200 Shown





ALUMA ELITE TREATMENT TABLE

The dependable Aluma Elite Treatment Table is the perfect centerpiece for each athletic training facility. The extraordinary load capacity of 750 lbs. and the standard 2 tape holders and aluminum shelf for storage make the Aluma Elite tables the perfect table for athletic trainers and athletes alike. Customize your treatment table to meet your needs with multiple cabinet options that provided ample storage, or the 70° manual lift back and 45° split leg cushion options.

Standard Features:

- Load capacity: 750 lbs.
- Durable aluminum construction
- Tough powder coat finish
- Tape holder on each end (not included with enclosed cabinet option) and a bottom shelf
- Graphics package: includes (1) school logo/name decal on each tape holder and (1) on bottom shelf
- 2" Semi-firm foam cushion
- Rounded corners
- A4201 Shown with options

ALUMA ELITE BEST SELLER

OUR MOST POPULAR TABLE

From NFL teams to high school training rooms, our Aluma Elite Treatment Table is our most purchased product. Obviously making it one of the best choices! Contact us today to start customizing your own.

800.743.7738 | TEAMEDGEATHLETICS.COM



Basic Treatment Table

The extraordinary load capacity of 650 lbs. and the welded aluminum frame make the Aluma Elite Basic Treatment Table the perfect table for your office, clinic, gym, or facility. Each table comes standard with welded aluminum frame, h-brace construction, comfortable 2" high density foam cushion, and softly rounded corners. Make it your own by adding length or width, laminate shelves, or a cabinet that can be mounted on either end. Patient-friendly customizations include a nose hole and 70° manual lift back.

Standard Features:

- Load capacity: 650 lbs.
- Welded Aluminum Frame
- H-brace construction
- 2" High density foam cushion
- Rounded corners
- Tough powder coat finish
- A4327-3078 Shown with options



Classroom/Lab Table

The Aluma Elite Classroom/Lab Table is a multi-purpose desk and treatment table perfect for a clinic or classroom setting. The table is constructed of durable aluminum with a flat, laminate top. Add storage to your table by adding 2 open cubbies. An optional removable 2" vinyl/foam pad attaches to the laminate table top using hook and loop fastener. When not in use, the pad hangs from the front of the table. Table is fully welded and ships assembled.

Standard Features:

- Load capacity: 750 lbs.
- 6 Leg durable aluminum construction
- Tough powder coat finish
- Flat, laminate top
- AECL6L-C Shown with options



PRO Treatment Table

The extraordinary load capacity of 750 lbs., extended length and the standard 2 tape holders and aluminum shelf for storage make the Aluma Elite PRO Treatment Table the perfect table for athletic trainers and athletes alike. Customize your treatment table to meet your needs with multiple cabinet options that provided ample storage, or the 70° manual lift back and 45° split leg cushion options.

Standard Features:

- Load capacity: 750 lbs.
- Durable aluminum construction
- 6 Leg welded frame
- Tough powder coat finish
- Tape holder on each end and a bottom shelf
- Graphics package: includes (1) school logo/name decal on each tape holder and (1) on bottom shelf
- 2" Semi-firm foam cushion
- Rounded corners
- A4201-PRO Shown with options

ALUMA ELITE MAT TABLES

Mat Tables

- Load capacity: 1000 lbs.
- 48"W x 84"L, 60"W x 84"L, 72"W x 96"L Options
- Fixed and elevated height options (21-31")
- Durable aluminum construction
- Tough powder coat finish
- Leveling feet
- 1.5" Semi-firm foam cushion
- Rounded corners
- Elevation option: hand control is mounted on one side
- Graphics package: includes (1) school logo/name decal on each tape holder (1 on each end) (Only available with storage shelf option)
- A4520 Shown with options

DIFFERENT SIZE CONFIGURATIONS



Wall Mount Mat Table

- Load capacity: 600 lbs.
- 48"W x 84"L x 18"H
- Durable aluminum construction
- Tough powder coat finish
- 2" High density foam
- Wall mounting plate
- ADA Compliant
- WM1001 Shown

PASS THROUGH STORAGE



ALUMA ELITE A6000 TREATMENT CABINET

The Aluma Elite Treatment Cabinet is the perfect centerpiece for your athletic training facility. Configure your treatment table to meet your needs with multiple cabinet and drawer options that provide ample storage. Your top can be configured to include a lift back and/or split leg configuration. This workhorse can be purchased as a stationary table or configured to include hi-lo elevation. Each treatment cabinet also comes standard with dual-side USB/120V outlets.

Standard Features:

- Load capacity: 750 lbs.
- 30"W x 78"L x 31"H
- Durable aluminum construction
- Tough powder coat finish
- Pass through storage accessible on both sides
- (1) USB/120V Outlet on each side
- Graphics package: includes (1) large logo decal on foot end
- 2" Semi-firm foam cushion
- Rounded corners
- A6000 Shown with options

OTHER OPTIONS

Elevating option available! (Height ranges from 31-41"H)
A6190 - 20.5"H or 20.5-30.5"H

800.743.7738 | TEAMEDGEATHLETICS.COM

ALUMA ELITE MODALITY CARTS

Standard Features:

- Load capacity: 500 lbs.
- Durable aluminum construction
- Tough powder coat finish
- Aluminum top with electrical grommet for easy cord routing
- 7" Drawer(s)
- Drawer/Door key locks
- 2" Non-marking casters with brakes
- Graphics package: includes custom graphic on one door or drawer



A4203
31"W x 23"D x 38"H
(1) 7" Drawer, (2) doors



A4204
31"W x 23"D x 38"H
(4) 7" Drawers



A4383
31"W x 23"D x 38"H
(1) 7" Drawer, (4) slide out drying racks



A4510
31"W x 23"D x 38"H
(1) 7" Drawer, open bottom



A4203-24
24"W x 23"D x 38"H
(1) 7" Drawer, (2) doors



A4204-24
24"W x 23"D x 38"H
(4) 7" Drawers



A4383-24
24"W x 23"D x 38"H
(1) 7" Drawer, (3) slide out drying racks



A4510-24
24"W x 23"D x 38"H
(1) 7" Drawer, open bottom

ALUMA ELITE XL RECOVERY CART

The XL Recovery Cart features mobility and storage for the NormaTec Leg Recovery System. The cart is constructed of durable aluminum and features a slide out boot rack, two drawers, locking casters, a medical grade power strip, and pop-up outlets with USB ports. Custom graphics are included on the front drawers of the cart. NormaTec Recovery System not included.

Standard Features:

- Load capacity: 500 lbs.
- Durable aluminum construction
- Tough powder coat finish
- (1) Slide out boot rack, holds 2 pairs of NormaTec boots
- (2) Drawers (20.5"W x 17.5"D x 12"H)
- 2" Non-marking casters with brakes
- Built-in medical grade power strip with 6' cord
- Pop-up power with 3 outlets and 2 USB ports
- Graphics package: includes custom graphics on 2 front drawers
- A5010 Shown



500 LB. LOAD CAPACITY

WHY CHOOSE ALUMA ELITE?

Our Aluma Elite products are made from high-grade aluminum, known for its exceptional strength-to-weight ratio, ensuring the equipment is both robust and lightweight, making it durable and easy to handle. Aluminum's natural resistance to corrosion means our products can withstand harsh environments and heavy use without rusting or degrading over time, making them ideal for both indoor and outdoor use. The lightweight nature of aluminum also makes our products highly portable and easy to move around, which is especially beneficial for equipment that needs to be frequently relocated or transported. With years of experience and a solid reputation in the industry, our Aluma Elite series stands for high quality and reliability.

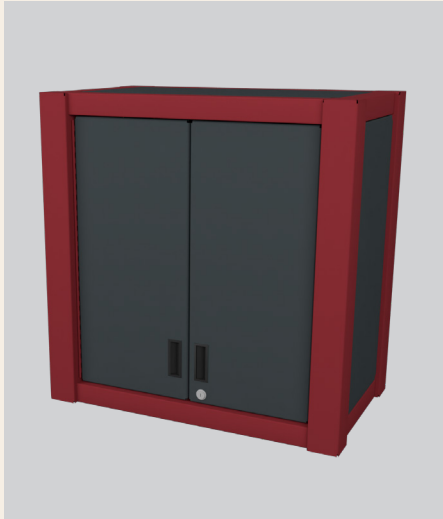




WANT TO KNOW MORE ABOUT LOCKERS?

Athletic Edge lockers are specialized storage units designed to meet the needs of athletes, sports teams, and recreational facilities. Built from high-quality materials such as aluminum, wood, laminate, or phenolic, they are designed to withstand heavy use and resist damage. Key features include ventilation holes or mesh panels to promote airflow and prevent odors, secure locking mechanisms, and various compartments, shelves, and hooks for organizing equipment and personal items. Athletic Edge lockers can be branded with team logos, names, or numbers, and some models include additional amenities like power outlets or USB ports. Available in multiple sizes, colors, and configurations, Athletic Edge lockers provide practical storage solutions that enhance organization, security, and convenience for athletes and team members in schools, universities, professional sports teams, and recreational facilities.

ALUMA ELITE CABINETS



Wall Cabinet A4885

Standard Features:

- 30"W x 18"D x 30.5"H
- Durable aluminum construction
- Tough powder coat finish
- (1) Adjustable shelf for each cabinet
- Double doors
- Door key locks
- Graphics package: includes custom graphic on one door



Base Cabinet A4803

Standard Features:

- 30"W x 24"D x 36.5"H
- (1) 6.75" Drawer
- (2) Doors
- (1) Adjustable shelf
- Durable aluminum construction
- Tough powder coat finish
- Drawer/door key locks
- Graphics package: includes custom graphic on one door or drawer



Base Cabinet A4804

Standard Features:

- 30"W x 24"D x 36.5"H
- (4) 7.5" Drawers
- Durable aluminum construction
- Tough powder coat finish
- Drawer key locks
- Graphics package: includes custom graphic on one drawer



Base Cabinet A4805

Standard Features:

- 30"W x 24"D x 36.5"H
- (2) Doors
- (1) Adjustable Shelf
- Sink kit add-on option available
- Durable aluminum construction
- Tough powder coat finish
- Door key locks
- Graphics package: includes custom graphic on one door

ALUMA ELITE STATIONARY CABINETS



A4302

- 32"W x 21"D x 72"H
- Load capacity: 500 lbs. (100 lbs. per shelf)
- Durable aluminum construction
- Tough powder coat finish
- Locks included
- 4 Adjustable leveling feet
- Graphics package: includes custom decal on the front doors



AESC-004D

- 32"W x 21"D x 72"H
- Load capacity: 500 lbs. (100 lbs. per shelf)
- Durable aluminum construction
- Tough powder coat finish
- Locks included
- 4 Adjustable leveling feet
- Graphics package: includes custom decal on the front doors



AESC-008D

- 32"W x 21"D x 72"H
- Load capacity: 500 lbs. (100 lbs. per shelf)
- Durable aluminum construction
- Tough powder coat finish
- Locks included
- 4 Adjustable leveling feet
- Graphics package: includes custom decal on the front doors



AESC-009D

- 32"W x 21"D x 72"H
- Load capacity: 500 lbs. (100 lbs. per shelf)
- Durable aluminum construction
- Tough powder coat finish
- Locks included
- 4 Adjustable leveling feet
- Graphics package: includes custom decal on the front doors



AESC-010D

- 32"W x 21"D x 72"H
- Load capacity: 500 lbs. (100 lbs. per shelf)
- Durable aluminum construction
- Tough powder coat finish
- Locks included
- 4 Adjustable leveling feet
- Graphics package: includes custom decal on the front doors



AESC-012D

- 32"W x 21"D x 72"H
- Load capacity: 500 lbs. (100 lbs. per shelf)
- Durable aluminum construction
- Tough powder coat finish
- Locks included
- 4 Adjustable leveling feet
- Graphics package: includes custom decal on the front doors

BUILT TO LAST...

The Aluma Elite Stationary Cabinet is constructed of durable aluminum and features double doors with three point handle/latch mechanism and multiple inside configurations. Custom graphics are included on the front doors, and your choice of frame and accent color.



ALUMA ELITE WHIRLPOOL TABLES

Single Whirlpool Tables

- Load capacity: 600 lbs.
- 31" & 34" Height options
- Durable aluminum construction
- Tough powder coat finish
- Rugged phenolic top
- Storage shelf
- Graphics package: includes custom graphics on the 2 ends of the table
- A4120 Shown (whirlpool tub not included)



SINGLE & DUAL CONFIGURATIONS



Dual Whirlpool Tables

- Load capacity: 600 lbs.
- 31" & 34" Height options
- Durable aluminum construction
- Tough powder coat finish
- Rugged phenolic top
- Storage shelf
- Graphics package: includes custom graphics on the 2 ends of the table
- A4162 Shown (whirlpool tub not included)

SAN JOSE STATE CASE STUDY

The Athletic Edge & San Jose State University: A Partnership Forged in Excellence

The journey of San Jose State University (SJSU) to elevate its athletic facilities is a testament to vision, dedication, and strategic collaboration. The inception of the new Spartan Athletic Center, envisioned by the athletics administration staff, alums, donors, and a former football coach, showcases the collective ambition and the pivotal role of The Athletic Edge in turning visions into reality. These insights are provided by Stephen Bartlinski, MS/ATC/PTA, Director of Sports Medicine at San Jose State University, who offers a firsthand account of the project's vision and execution.

Vision Meets Execution

The quest to design a modern and functional athletic training space was driven by the need to accommodate over 450 student-athletes at SJSU, facing significant challenges such as space constraints. The Athletic Edge emerged as the solution, enabling SJSU to maximize space in the new facility while providing a modern, cutting-edge look to the equipment.



ORGA WITH
STEPHEN
BARTLINSKI

Transforming Spaces, Elevating Performance

The Athletic Edge's equipment, especially the flexibility of multiple hi-lo tables, has transformed the functionality of SJSU's training rooms. It accommodates the diverse needs of student-athletes and sports medicine staff. This adaptability is crucial for the individualized care necessary to maintain peak athletic performance.

The Game Changer: Electric Hi-lo Tables

The electric hi-lo tables have been particularly impactful. They have revolutionized treatment processes and made it easier for healthcare professionals to cater to student-athletes. Their functionality and design have been a game changer for the program.

A Partnership Built on Trust and Excellence

The decision to partner with The Athletic Edge was driven by customer service and product aesthetics. Stephen Bartlinski emphasizes the ease of collaboration and The Athletic Edge's attentiveness to SJSU's needs, facilitating a smooth journey from design to implementation.

Why The Athletic Edge?

The recommendation of The Athletic Edge to other institutions is underscored by exceptional customer service and the client's vision and needs prioritization. Quality control measures ensure that only the best products reach the client, instilling confidence that the investment will yield the desired outcomes.

SPARTAN STRONG

Q: Could you walk us through the vision and execution of your project at San Jose State University?

A: The new SJSU Spartan Athletic Center was envisioned many years ago by members of the athletics administration staff, alumni, donors, and our former football coach. It took a lot of work, energy, and fundraising to bring this dream to fruition. We were able to help design an athletic training space that is modern and functional, in order to be able to provide for our student-athletes.

Q: Before integrating Athletic Edge equipment, what were the primary limitations or issues faced in your athletic training facilities, such as space constraints, budget limitations, or outdated equipment?

A: We have multiple athletic training rooms at SJSU, and the major problem in most of them is space constraints. We have over 450 student-athletes, and space is imperative to success. Athletic Edge has allowed us to maximize our space in our new facility while also providing a modern, cutting-edge look to the equipment.

Q: In what ways has the new equipment from Athletic Edge transformed the functionality of your training room? How does it align with the specific needs of your athletes and trainers?

A: Not all athletes are built the same, and not all healthcare professionals are built the same. Having multiple hi-lo tables provides us with the flexibility needed to accommodate all of our student-athletes and our sports medicine staff.

BRANDED PANELS



WHY CHOOSE THE ATHLETIC EDGE?

At The Athletic Edge, we're all about working closely with you to ensure your training rooms, locker areas, and facilities aren't just functional – they've got to look extraordinary, too. Our custom-designed products do more than fill a space; they tell your unique story.

Our promise? Every product from us checks all the boxes – durable, user-friendly, comfortable for patients, and perfect for showcasing your brand.

Today, you'll spot The Athletic Edge's signature touch all over the country – from the big leagues to universities and high schools. We're thrilled about that. More than anything, we're excited to work with you to help share your story through equipment and spaces that are both high-quality, branded, and stunningly functional.

Photos by: Caitlyn Wyss

7 TOP CONFIGURATIONS

TABLE CONFIGURATIONS WITH MANUAL LIFT BACK:

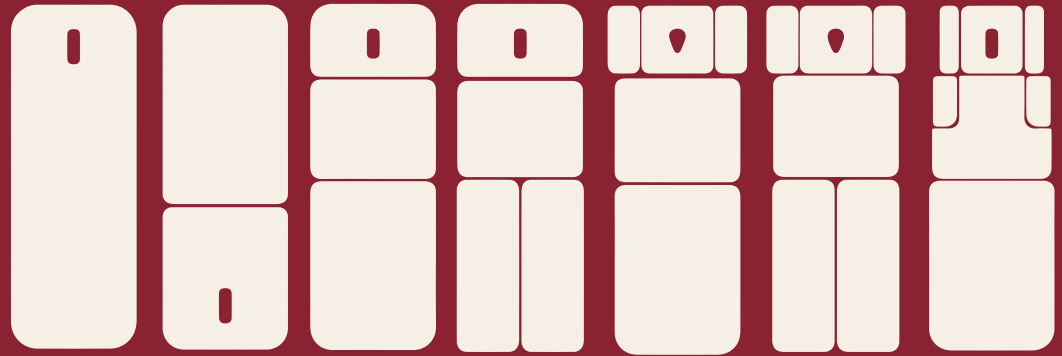
PT1101 - 1 Section, PT1102 - 2 Section, PT1103 - 3 Section, PT1104 - 4 Section,
PT1105 - 5 Section, PT1106 - 6 Section, PT1177 - 7 Section

TABLE CONFIGURATIONS WITH ELECTRIC LIFT BACK:

PT1103-EL - 3 Section, PT1105-EL - 5 Section

* 27" or 30" W available

* International 240V option available



STANDARD & BARIATRIC OPTIONS

THERA-P™ TREATMENT TABLE

Standard Features:

- Load capacity: 650 lbs.
- 27"W x 77"L x 17-35"H
- Durable and stylish steel base (PT9020/PT9028)
- White anti-bacterial and anti-microbial powder coat base
- Whisper quiet lift system with single foot control pedal
- Height adjustment: 17-35"
- 27" Wide cushions in 7 different configuration options
- 2" High density foam cushions with rounded corners
- Low profile locking casters
- Head section angle range: +40° to -90° (PT1177: +35° to -45°)
- Lower extremity angle range: 0 to 65° (PT1177: 0 to 75°)
- Armrest horizontal range: 0 to 45°
- Armrest vertical range: 0 to 7"
- 7 Section configuration includes electric elevating midsection with hand control
- ADA Compliant
- ETL/UL listed
- Available in bariatric and bobath configurations
- PT1103 Shown with options

PATENTED TREATMENT TABLE



LEG & SHOULDER THERAPY TABLE

Ergonomically designed, the Leg & Shoulder Therapy (LAST™) Table with hi-lo elevating base is the first treatment/exercise table that supports bilateral training and specific anatomical positioning to achieve the desired results for both professional athletes and weekend warriors. The elevating base ensures that even athletes with limited mobility have easy access in any setting. To maximize your efforts as physical therapists, athletic trainers and clinicians, the LAST table is a must for your rehabilitation practice or training rooms.

Standard Features:

- Load capacity: 650 lbs.
- 30"W x 84"L x 19-37"H
- Adjustable top with standard elevating base
- White powder coat base
- Whisper quiet lift system
- Height adjustment: 19-37"
- Single foot control pedal
- Elevating back: 0 - 70°
- Elevating legs: 0 - 90°
- Leg height: 17"
- Drop legs: 0 - 90°
- 2" High density foam cushions
- Rounded corners
- Low profile locking casters
- Nose hole
- ADA Compliant
- US PATENT NO. 10,857,052
- PT9060-650 Shown with options

OFTEN
IMITATED

NEVER
DUPLICATED





ME2000 Elevating Treatment Table

- Load capacity: 400 lbs.
- 28"W x 77"L x 24-36"H
- 24-36" Height range
- Steel base with white anti-bacterial and anti-microbial powder coat
- (2) Sliding doors on each side of table
- (1) Foot pedal
- Flat 2" high density foam cushion with nose hole
- Rounded corners
- ME2000 Shown with options

NEW!! Side Bumper Option, Contact for more details!



ET Treatment Cabinet

- Load capacity: 500 lbs.
- 30"W x 83"L x 29-44"H
- Durable metal cabinet with black powder coat
- Leveling feet on cabinet base
- 2" Casters for easy movement
- (1) Mounted hand control
- Quiet and smooth lift columns elevate athletes with ease
- 2" High density foam flat, seamless cushion
- Rounded corners
- Door locks included on ET-101, ET-102 models, ET-106, and ET-107 models
- Fixed height (32") treatment cabinets also available
- ET-101 Shown with options



PT2000 Bariatric Hi-Lo Mat Table

- Lifting capacity: 1,000 lbs.
- Height range: 18-33"
- Durable steel base with powder coat finish
- 1.5" High density foam cushion
- Rounded corners
- Single foot control
- Convenient drop down casters
- Also available without casters (PT2001)
- ADA Compliant
- PT2000 Shown

MODULAR TAPING STATIONS

Modular Taping Station

- Load capacity: 450 lbs. per seat
- Dowel and glue construction
- Fully finished cabinets
- Laminate and wood options
- Full extension drawer glides
- Front and side access
- Black wire pull handles
- 110° Euro hinges
- Seamless 2" high density foam cushion
- Rounded corners
- Depths: 36", 42" or 48"
- Heights: 36" or 42"
- Width: 24"W cabinet sections (26"W cushions)
- TTS2-3642 Shown



DIFFERENT SIZE CONFIGURATIONS



Individual Modular Taping Seats

- Load capacity: 450 lbs.
- Dowel and glue construction
- Fully finished cabinets
- Laminate and wood options
- Front and side access
- Black wire pull handles
- 110° Euro hinges
- Seamless 2" high density foam cushion
- Rounded corners
- Individual Taping Seat Dimensions:
 - 24"W (26"W with Cushion) x 36", 42" or 48"D x 36" or 42"H
- Individual Center Storage Module Dimensions:
 - 24"W x 36", 42" or 48"D x 32.75" or 38.75"H
- ITT-4242FS Shown with options

PRO TILT TAPING STATION

The PRO Tilt Taping Stations feature 36" wide cushions for larger athletes. The taping stations come with tilt back cushions, armrests on both sides of the taping seats, and ample storage space. Each taping seat comes with one full extension drawer and cabinet with two doors. Taping stations can be configured as one seat, two seat, or three seat taping stations and are available in laminate or wood construction.

Standard Features:

- Load capacity: 550 lbs. per seat
- 36"W Tilt back cushion
- Fully finished cabinets
- 1 Drawer
- 2 Hinged doors
- Armrests on both sides
- Available in laminate or wood options
- Full extension glides on drawers
- 110° Euro hinges
- Black wire pull handles
- Seamless 2" high density foam cushion
- Rounded corners
- PRO-TTS1 Shown with options

ARMRESTS ON BOTH SIDES



MULTIPLE CONFIGURATIONS AVAILABLE



EDGE SPORT WOOD TREATMENT TABLE

Edge Sport Wood Treatment Table

Custom build your wood treatment table to meet the specific needs of your athletic training room. Each table comes standard with solid hardwood legs and base, H-brace construction, thick 3/4" plywood top, comfortable 2" high density foam cushion, softly rounded corners and dual-bolted leg assembly that folds down for easy shipping. Make it your own by adding length or width, shelves or a cabinet that can be mounted on either end. Patient-friendly customizations include a nose hole and 70° manual lift back with 6 position elevation.

Standard Features:

- Load capacity: 550 lbs.
- Solid hardwood h-brace construction
- 2" High density foam cushion
- Rounded corners
- Dual-bolted leg assembly that folds down for convenient shipping
- TESS-3078 Shown with options

ELEGANT, RESILIENT, AND BUILT TO LAST

The Athletic Edge offers a distinctive range of treatment tables, engineered with versatile configurations to enable athletic trainers and therapists to provide a broad spectrum of treatments in both comfort and safety. Our chic designs can also be customized with personalized cushion slipcovers, debossed cushions, or vibrant logo decals.

800.743.7738 | TEAMEDGEATHLETICS.COM



6 Leg Edge Sport Wood Treatment Table

- Load capacity: 800 lbs.
- Solid hardwood 6 leg h-brace construction
- 2" High density foam flat, seamless cushion
- Rounded corners
- Triple-bolted leg assembly
- Bottom shelf for added storage
- TESS-6L Shown with options

PRO 6 Leg Edge Sport Wood Treatment Table

- Load capacity: 800 lbs.
- Solid hardwood 6 Leg h-brace construction
- 2" High density foam cushion
- Rounded corners
- Triple-bolted leg assembly
- Bottom shelf for added storage
- TESS-6L PRO Shown with options



LARGER
SIZE
CONFIGURATION

WOODEN TREATMENT TABLES

Hip & Knee Flexion Treatment Table

- Load capacity: 800 lbs.
- Solid hardwood construction
- Dual brace support
- Rounded corners
- Manual lift back
- Elevating back: 0 - 70°
- Elevating legs: 0 - 90°
- Hip/Knee flexion
- Bottom shelf for added storage
- PT9080 Shown



2" HIGH DENSITY FOAM CUSHIONS



NSK Wood Treatment Table

- Load capacity: 800 lbs.
- Solid hardwood partial 6 leg h-brace construction
- (2) Shelves on head end for added storage
- 2" High density foam cushion
- Rounded corners
- Triple-bolted leg assembly
- TESS-NSK-100 Shown



POPLAR HARDWOOD FRAME

ESSENTIAL WOOD TREATMENT TABLE

Address the specific needs of your practice with the versatile options available in the Essential Wood Treatment Table. Each table features a standard poplar hardwood frame, h-brace construction, a comfortable 2" high-density foam cushion, softly rounded corners, and a dual-bolted folding leg assembly for easy shipping. Customize it to your liking by adding length, width, shelves, or a cabinet that can be mounted on either end. Additional patient-friendly customizations include a nose hole cushion and a 70° manual lift back with six position elevations.

Standard Features:

- Load capacity: 500 lbs.
- Solid poplar hardwood frame
- H-brace construction
- 2" High density foam cushion
- Rounded corners
- Dual-bolted folding leg assembly for convenient shipping
- TEWT-3078 Shown with options

8 SIZE OPTIONS

STANDARD TABLE CONFIGURATIONS:

FEWT-2772 - 27" Flat Cushion (27"W x 72"L x 31"H)

FEWT-3072 - 30" Flat Cushion (30"W x 72"L x 31"H)

FEWT-2778 - 27" Flat Cushion (27"W x 78"L x 31"H)

FEWT-3078 - 30" Flat Cushion (30"W x 78"L x 31"H)

LIFT BACK TABLE CONFIGURATIONS:

TEWT-2772 - 27" Lift Back Cushion (27"W x 72"L x 31"H)

TEWT-3072 - 30" Lift Back Cushion (30"W x 72"L x 31"H)

TEWT-2778 - 27" Lift Back Cushion (27"W x 78"L x 31"H)

TEWT-3078 - 30" Lift Back Cushion (30"W x 78"L x 31"H)



SPECIALTY TREATMENT TABLES

Classroom/Lab Treatment Table

- Load capacity: 600 lbs.
- Solid hardwood frame
- 6 Leg construction
- Flat, laminate top
- 31.5" Clearance for stools (without cubbies)
- FESS-LAB-6L Shown with options

The Classroom/Lab Treatment Table is a multi-purpose desk and treatment table perfect for a clinic or classroom setting. The table is constructed of solid hardwood with a flat, laminate top. Add storage to your table by adding 2 open cubbies. An optional removable 2" vinyl/foam pad attaches to the laminate table top using hook and loop fastener. When not in use, the pad hangs from the front of the table.



OPTIONAL CUBBIES AND FOAM PAD



Combination Lab Table/Desk

- Load capacity: 450 lbs.
- Solid hardwood frame
- 4 Leg construction
- Flat, laminate top
- 24" Clearance for stools
- FESS-LAB Shown with options

The Combination Lab Table/Desk is a desk or treatment table ideal for classroom training. The table is constructed of solid hardwood with a flat, laminate top. Some on site assembly required.



Edge Sport Wood Mat Table

- Load capacity: 450 lbs.
- Solid hardwood frame and 4 legs
- 3/4" Plywood top
- 1.5" High density foam cushion
- Rounded corners
- Triple-bolted leg assembly
- ADA Compliant
- MAT-4884-4L Shown

4 LEG CONFIGURATION

- Load capacity: 450 lbs.
- 48"W x 72"L x 19"H
- 60"W x 84"L x 19"H
- 72"W x 96"L x 19"H

6 LEG CONFIGURATION

- Load capacity: 700 lbs.
- 48"W x 84"L x 19"H
- 60"W x 84"L x 19"H
- 72"W x 96"L x 19"H

Designed to support the busy athletic trainer and multiple athletes, solid hardwood construction means our Mat Table is built for strength and stability during athletic trainer-assisted exercise and other treatments. Our 4 Leg Mat table comes standard with solid hardwood on the base frame, four legs and supports with a thick plywood top construction. The mat table also features a layer of comfortable 1.5" high density foam with softly rounded corners and triple-bolted leg assembly for extra durability.

Wall Mount Folding Treatment Table

- Load capacity: 450 lbs.
- Solid hardwood frame
- 2" High density foam cushion
- Durable wall mounting plate
- WMFTT-2472 Shown

The Wall Mount Folding Treatment Table is a fold out treatment table ideal for small spaces. The table is constructed of solid hardwood with a flat, seamless 2" high density foam cushion. Three legs attach to the wall, while the two front legs and cushion fold out away from the wall when needed. A durable wall mounting plate is included (wall fasteners not included).

4 6 LEG CONFIGURATION



EDGE OPTIONS TREATMENT CABINETS

Nothing makes a greater impact inside your training room than a row of smartly designed and custom branded treatment cabinets. Our line of cabinets meet the functional needs of athletic trainers and therapists. This beautifully functional line offers several upholstery options and the ability to apply your team or organization logo both to the cushion top and to the cabinetry. Your athletic training room will shine with the addition of our premium training and recovery treatment cabinets. Apply your team or organization logo to the top and to the cabinet exterior.

CAB-160 EDGE OPTIONS TREATMENT CABINET



WOOD OR LAMINATE
OPTIONS

Your athletic training room will shine with the addition of our premium training and recovery treatment cabinets. Our line of cabinets meet the functional needs of athletic trainers and therapists, with ample storage plus 60° lift back and 45° split leg options. The CAB-160 Edge-Options Treatment Cabinet features a customizable three section cabinet. Apply your team or organization logo to the top and to the cabinet exterior.

Standard Features:

- Load capacity: 600 lbs.
- 30"W x 78"L x 31"H
- Open, customizable 3 section cabinet
- Pass through storage accessible on both sides
- Available in wood or laminate finishes
- 2" High density foam cushion
- Rounded corners
- Black wire pull handles
- 4" Toe kick
- 110° Euro hinges on doors
- (1) Adjustable shelf in each section
- CAB-160 Shown with options



CAB-180

The CAB-180 model is a three section cabinet that features four hinged doors on each side, drawer storage on foot end and one adjustable shelf in each doored section. Apply your team or organization logo to the top and to the cabinet exterior.

Standard Features:

- Load capacity: 600 lbs
- 30"W x 78"L x 31"H
- 3 Section cabinet
- (4) Hinged doors on each side
- Drawers on foot end
- (1) Adjustable shelf in door section
- Available in wood or laminate finishes
- 110° Euro hinges on doors
- 2" High density foam cushion
- Rounded corners
- Black wire pull handles
- CAB-180 Shown with options



CAB-170

The CAB-170 Edge-Options Treatment Cabinet with solid back model features a customizable three section cabinet. These cabinets meet the functional needs of athletic trainers and therapists, with ample storage plus 70° lift back and 45° split leg options. Apply your team or organization logo to the top and to the cabinet exterior.

Standard Features:

- Load capacity: 600 lbs.
- 30"W x 78"L x 31"H
- Customizable 3 section cabinet with solid back
- Available in wood or laminate finishes
- 2" High density foam cushion
- Rounded corners
- Black wire pull handles
- 4" Toe kick
- 110° Euro hinges on doors
- (1) Adjustable shelf in each section
- CAB-170 Shown with options



CAB-010

Our line of cabinets meet the functional needs of athletic trainers and therapists, with ample storage plus lift and split leg options. The CAB-010 model features closed storage for a neater presentation, with a three section cabinet with one adjustable shelf in each section and six hinged doors on one side. Apply your team or organization logo to the cushion top and to the cabinet exterior.

Standard Features:

- Load capacity: 600 lbs.
- 30"W x 78"L x 31"H
- 3 Section cabinet
- (6) Hinged doors on front with a solid back
- (1) Adjustable shelf in each section
- Available in wood or laminate finishes
- 110° Euro hinges on doors
- 2" High density foam cushion
- Rounded corners
- Black wire pull handles
- CAB-010 Shown with options



CAB-030

Standard Features:

- Load capacity: 600 lbs.
- 32"W x 74"L x 36"H
- 3 Section convertible taping cabinet
- (6) Hinged doors on front with a solid back
- (3) Drawers
- (1) Adjustable shelf in each section
- (2) Taping sections
- (1) Removable seat in middle section
- Available in wood or laminate finishes
- 110° Euro hinges on doors
- Full extension glides on middle drawer
- 2" High density foam cushions
- Rounded corners
- Black wire pull handles
- CAB-030 Shown with options



CAB-020

Standard Features:

- Load capacity: 600 lbs.
- 30"W x 78"L x 31"H
- 3 Section cabinet, open on both sides
- (1) Adjustable shelf for each section
- Available in wood or laminate finishes
- 2" High density foam cushion
- Rounded corners
- CAB-020 Shown with options



CAB-050

Standard Features:

- Load capacity: 600 lbs.
- 30"W x 78"L x 31"H
- 2 Section cabinet
- (2) Sliding doors on front with a solid back
- (1) Adjustable shelf in each section
- Available in wood or laminate finishes
- 2" High density foam cushion
- Rounded corners
- Black wire pull handles
- CAB-050 Shown with options



CAB-090N

Standard Features:

- Load capacity: 600 lbs.
- 30"W x 85"L x 32"H
- Dual extension drawer (22"L x 17"W x 17"H) accommodates the NormaTec product line
- Dual extension boot rack (44"L x 24"W) accommodates 2 pairs of NormaTec boots
- Boot rack contains 2 trays (24"L x 11"W x 4.5"H) that hold the NormaTec control units
- Available in wood or laminate finishes
- Wood cabinets available in natural finish or black stain
- 2" High density foam
- Rounded corners
- 55° Lift back and 45° split legs
- Graphics package with Hyperice and Athletic Edge branding
- Add your school/organization logo above the pull out drawers for no additional charge
- CAB-090N Shown with options



CAB-070

Standard Features:

- Load capacity: 600 lbs.
- 30"W x 78"L x 31"H
- 3 Section cabinet
- (4) Hinged doors on each side
- Open storage under foot end
- (1) Adjustable shelf in each section
- Available in wood or laminate finishes
- 110° Euro hinges on doors
- 2" High density foam cushion
- Rounded corners
- Black wire pull handles
- CAB-070 Shown with options



CAB-100-LST

Standard Features:

- Load capacity: 500 lbs.
- 30"W x 84"L x 34"H
- 3 Section cabinet
- (4) Hinged doors on each side
- Pass through open storage on foot end
- (1) Fixed height shelf in each section
- 70° Mechanical friction lock elevating back
- 90° Split leg elevation
- Drop out leg/shoulder area for improved range of motion
- Available in wood or laminate finishes
- 110° Euro hinges on doors
- 2" High density foam cushion
- Rounded corners
- Black wire pull handles
- Nose hole
- US Patent: 10,857,052

TREATMENT CABINETS

CAB-120

- Load capacity: 600 lbs.
- 27"W x 78"L x 34"H
- 3 Section cabinet
- Open pass through storage on both sides
- Tape station seat on one end
- Open cubby and (2) hinged doors
- (1) Adjustable shelf in each section
- Available in wood or laminate finishes
- 110° Euro hinges on doors
- 2" High density foam cushions
- Rounded corners
- 55° Lift back with manual gas shock
- Black wire pull handles
- CAB-120 Shown with options



ENDLESS STORAGE



Deluxe Stretch Table

- Load capacity: 700 lbs.
- Available in wood or laminate
- Glue and dowel construction
- 2" High density foam cushion
- Rounded corners
- Black toe-kick plate
- Storage area on one side
- Divided cubby section (one end only)
- One adjustable shelf in center section of divided end cubby
- DST-7834 Shown

STORAGE CABINETS



PT9081

- Load capacity: 600 lbs.
- 30"W x 81.5"L x 31"H
- 3 Section cabinet, open on both sides
- (1) Adjustable shelf for each section
- Available in wood or laminate finishes
- 2" High density foam cushion
- Lift back cushion
- Mechanical friction lock elevating back: 0 - 70°
- Elevating legs: 0 - 90°
- Hip & knee flexion
- Rounded corners
- Table shown with options

HIP & KNEE FLEXION CABINETS

PT9082

- Load capacity: 600 lbs.
- 30"W x 81.5"L x 31"H
- 3 Section cabinet
- (6) Hinged doors on front with a solid back
- (1) Adjustable shelf in each section
- Available in wood or laminate finishes
- 110° Euro hinges on doors
- 2" High density foam cushion
- Lift back cushion
- Mechanical friction lock elevating back: 0 - 70°
- Elevating legs: 0 - 90°
- Hip & knee flexion
- Rounded corners
- Black wire pull handles



SPLINT BATHS & NEW CARTS



STORAGE
DRAWER



Strava Basic

Standard Features:

- Automatic on/off
- Heats in 25 minutes
- User sets time & temperature
- Visual timer
- Temperature display
- Audible/Visual alerts
- Digital touch interface
- Low water sensor
- Bi-Fold stainless steel lid
- Rapid water evacuation

Strava Smart

Standard Features:

- UV-C Germicidal kill
- High-Heat sanitation cycle
- Thermoplastic presets
- Two-Stage filtration
- Automatic on/off
- Fast & uniform heating
- Heats in 25 minutes
- User sets time & temperature
- Visual timer
- Temperature display
- Audible/Visual alerts
- Digital touch interface
- Low water sensor
- Bi-Fold stainless steel lid
- Rapid water evacuation



SR-017 & SR-018 Splint Carts

Standard Features:

- 42"L x 24"W x 31" or 38"
- Laminate finish with HPL top
- Full extension glides on all drawers
- Black wire pull handles
- Top tray
- Open storage with adjustable shelf
- One handle
- Flip-up shelf
- 110 ° Euro hinges on doors
- Lockable vertical storage for splint material
- 4" Heavy duty casters
- Cabinets ship fully assembled
- SR-018 shown



Aluma Elite Splint Cart

Standard Features:

- 48"W x 29"D x 40"H
- 52"W x 29"D x 41"H with Handle
- Durable aluminum construction
- (4) Drawers with lock
- (1) Locking door
- Flip up phenolic shelf
- (4) Locking casters
- Handle for easy maneuverability

STOR-EDGE™ MODALITY CARTS

Small with ample storage, our wood or laminate modality carts come in standard and deluxe versions, with multiple drawer and shelf options that keep tools and treatment supplies close so athletic trainers and therapists can work more efficiently.

Standard Features:

- 2" Swivel nylon casters
- Full extension glides
- Ships fully assembled
- Wood or laminate (except for casters)



SMC-001
24"W x 18"D x 32"H



SMC-002
24"W x 18"D x 32"H



SMC-003
18"W x 18"D x 30"H



SMC-004
18"W x 18"D x 30"H



SMC-005
18"W x 18"D x 30"H



SMC-006
18"W x 18"D x 30"H



SMDC-001
24"W x 18"D x 38"H



SMDC-002
24"W x 18"D x 38"H

MODALITY & RECOVERY CARTS

18" & 24" DESIGNS



SMDC-003
24"W x 18"D x 38"H



SMDC-005
19"W x 23"D x 38"H



SMDC-006
24"W x 23"D x 38"H



SMDC-007
15"W x 23"D x 32"H

CONTACT US FOR A CUSTOM MODALITY CART QUOTE

For a personalized quote on our modality carts, please reach out to us today. Our team is ready to assist you in selecting the perfect cart to meet your specific needs. Whether you have questions about options, pricing, or delivery, we are here to help. Contact us now to receive a detailed quote and discover how our high-quality modality carts can enhance your practice.



NEED SOME ACCESSORIES?

Accessories:

- Neoprene dumbbell set
- Cuff wrist & ankle weights
- Theraband band set
- Theraband soft weight set
- Rehab weight bar set

Weight Kits:

Weight Kit #1

- (2) Sets of 1-10 lb Dumbbells, (1) Set of (16) Original Cuff Wrist & Ankle Weights, (1) Set of Theraband Bands

Weight Kit #2

- (2) Sets of 1-10 lb Dumbbells, (1) Set of (16) Original Cuff Wrist & Ankle Weights

Weight Kit #3

- (2) Sets of 1-10 lb Dumbbells, (1) Set of (16) Original, Cuff Wrist & Ankle Weights, (1) Set Theraband Bands, (1) Set of 1-3 lb Rehab Weight Bars

Weight Kit #5

- (2) Sets of 1-10 lb Dumbbells



WITH DOORS
WITHOUT DOORS

STOR-EDGE™ STATIONARY CABINETS



SC-003
32"W x 23"D x 76"H



SC-004
32"W x 23"D x 76"H



SC-006
32"W x 23"D x 76"H



SC-010
32"W x 23"D x 76"H



SC-011
32"W x 23"D x 76"H



SC-012
32"W x 23"D x 76"H

STATIONARY CABINETS

The stylish stationary cabinet systems provides multi-purpose storage in a variety of options, including base and tall cabinets, shelves or drawers and more - ideal for storing gear and other supplies inside a training room or office.

Standard Features:

- Available in wood or laminate finishes
- Cabinets available with or without exterior double doors
- Cabinets ship fully assembled
- All cabinets must be fastened to the wall (fasteners not included)



SC-007
16.5"W x 18"D x 84"H
Doors not available



SC-008
32"W x 23"D x 76"H



SC-009
32"W x 23"D x 76"H



SC-013
32"W x 23"D x 76"H



SC-014
32"W x 23"D x 76"H



SC-015
48"W x 23"D x 76"H

STOR-EDGE™ MULTI-PURPOSE CARTS



SR-001

- 30"W x 18"D x 72"H
- Front: slatwall & band dispensers
- Back: slatwall
- Sides: weight racks
- (9) 4" Double hooks
- (10) J-Hooks

OPTIONS

- SR-WK1 - Weight Kit 1
 - (2) 1-10 lbs. Dumbbell sets
 - (1) 16 pc. Hugger weight set
 - (1) Theraband band set
- SR-MI-001 - Mirror
 - 19.75"W x 65.5"H (back side)



SR-002

- 30"W x 24"D x 61"H
- Front: doors with (3) shelves
- Back: slatwall
- Sides: weight racks
- (4) 4" Double hooks
- (10) J-Hooks

OPTIONS

- SR-WK2 - Weight Kit 2
 - (2) 1-10 lbs. Dumbbell sets
 - (1) 16 pc. Hugger weight set
- TSFO-FHLD
 - Flush mount handles on large doors



SR-003

- 30"W x 18"D x 60"H
- Front: slatwall
- Back: weight racks
- Right side: band dispensers
- Left side: storage compartment
- (4) 4" Double hooks
- (10) J-Hooks

OPTIONS

- SR-WK3 - Weight Kit 3
 - (2) 1-10 lbs. Dumbbell sets
 - (1) 16 pc. Hugger weight set
 - (1) Theraband band set
 - (1) 1-3 lbs. Weight bar set



SR-004

- 24"W x 24"D x 61"H
- Front: band dispensers
- Back: slatwall
- Sides: weight racks
- (3) 4" Double hooks
- (6) J-Hooks

OPTIONS

- SR-WK3 - Weight Kit 3
 - (2) 1-10 lbs. Dumbbell sets
 - (1) 16 pc. Hugger weight set
 - (1) Theraband band set
 - (1) 1-3 lbs. Weight bar set



SR-005

- 32"W x 32"D x 72"H
- Front: cubbies, drop down desk, (3) 8" drawers
- Back: band dispensers & slatwall
- Left side: weight racks
- Right side: mirror
- (4) 4" Double hooks
- (12) J-Hooks
- Drawer lock on drop down desk

OPTIONS

- SR-WK3 - Weight Kit 3
 - (2) 1-10 lbs. Dumbbell sets
 - (1) 16 pc. Hugger weight set
 - (1) Theraband band set
 - (1) 1-3 lbs. Weight bar set
- TSFO-FHDR
 - Flush mount handles on drawers



SR-006

- 36"W x 36"D x 73"H
- Front: doors with (2) shelves & (2) 10" drawers
- Flush mount handles
- Back: weight racks
- Sides: slatwall
- (4) 4" Double hooks
- (12) J-Hooks

OPTIONS

- SR-WK3 - Weight Kit 3
 - (2) 1-10 lbs. Dumbbell sets
 - (1) 16 pc. Hugger weight set
 - (1) Theraband band set
 - (1) 1-3 lbs. Weight bar set

*Only available in wood with flush mount handles



- SR-008**
- 46"W x 26"D x 43"H
 - Front: (5) 18"W drawers & (1) 18"W door
 - Back: slatwall
 - Left side: weight racks
 - Right side: storage compartment
 - (4) 4" Double hooks
 - (10) J-Hooks
- OPTIONS**
- TSFO-FHD
 - Flush mount handles on door
 - TSFO-FHLD
 - Flush mount handles on large door



- SR-009**
- 36"W x 36"D x 73"H
 - Front: doors with (2) Shelves & (2) 10" drawers
 - Back: weight racks
 - Sides: slatwall
 - (4) 4" Double hooks
 - (10) J-Hooks
- OPTIONS**
- SR-WK3 - Weight Kit 3
 - (2) 1-10 lbs. Dumbbell sets
 - (1) 16 pc. Hugger weight set
 - (1) 5 Rep. resistance band set
 - (1) 1-3 lbs. Weight bar set
 - SR-MI-009 - Mirror
 - 26.5"W x 65.5"H (back side)
 - TSFO-FHDR
 - Flush mount handles on drawers
 - TSFO-FHLD
 - Flush mount handles on large doors



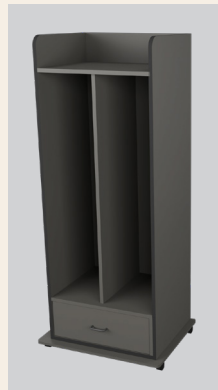
- SR-010**
- 72"W x 25.5"D x 33"H
 - Front: (2) sliding doors
 - Back & sides: solid
- OPTIONS**
- TSFO-FHD
 - Flush mount handles on doors



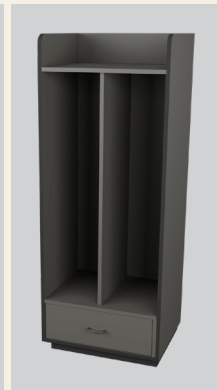
- SR-011**
- 50"W x 24"D x 65"H
 - (4) Cubbies
 - (4) Double hooks in each compartment
 - (2) Drawers
 - (4) 4" Casters
- OPTIONS**
- TSFO-FHDR
 - Flush mount handles on drawers



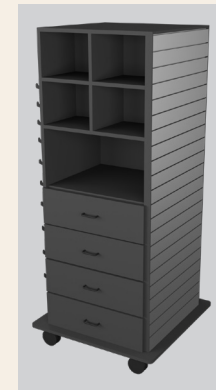
- SR-012**
- 48"W x 20"D x 64"H
 - (4) Cubbies
 - (4) Double hooks in each compartment
 - (2) Drawers
 - 4" Toe-kick
- OPTIONS**
- TSFO-FHDR
 - Flush mount handles on drawers



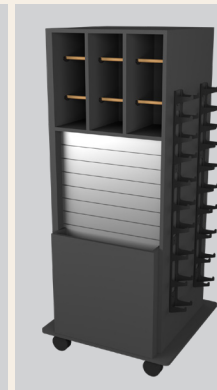
- SR-013**
- 26"W x 24"D x 65"H
 - (2) Cubbies
 - (4) Double hooks in each compartment
 - (1) Drawer
 - (4) 4" Casters
- OPTIONS**
- TSFO-FHDR
 - Flush mount handles on drawers



- SR-014**
- 24"W x 20"D x 64"H
 - (2) Cubbies
 - (4) Double hooks in each compartment
 - (1) Drawer
 - 4" Toe-kick
- OPTIONS**
- TSFO-FHDR
 - Flush mount handles on drawers



- SR-016**
- 32"W x 32"D x 72"H
 - Front: Cubbies, (4) 8" Drawers
 - Back: Band Dispensers, Slatwall, & Bar Box Storage Compartment
 - Left Side: Weight Racks
 - Right Side: Slatwall



- OPTIONS**
- SR-WK3 - Weight Kit 3
 - (2) 1-10 lbs. Dumbbell sets
 - (1) 16 pc. Hugger weight set
 - (1) 5 Rep. resistance band set
 - (1) 1-3 lbs. Weight bar set
 - TSFO-FHDR
 - Flush mount handles on drawers

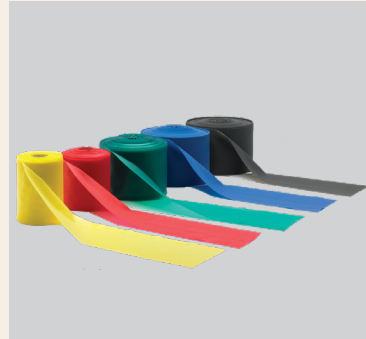
INDIVIDUAL WEIGHT & WEIGHT KIT SETS



Neoprene Dumbbells



Cuff Wrist & Ankle Weights



Theraband Bands



Theraband Soft Weights



Rehab Weight Bars



Weight Kit #1

- (2) Sets of 1-10 lb Dumbbells
- (1) Set of (16) Original Cuff Wrist & Ankle Weights
- (1) Set of Theraband Bands



Weight Kit #2

- (2) Sets of 1-10 lb Dumbbells
- (1) Set of (16) Original Cuff Wrist & Ankle Weights



Weight Kit #3

- (2) Sets of 1-10 lb Dumbbells
- (1) Set of (16) Original, Cuff Wrist & Ankle Weights
- (1) Set Theraband Bands
- (1) Set of 1-3 lb Rehab Weight Bars



Weight Kit #5

- (2) Sets of 1-10 lb Dumbbells

STOR-EDGE™ WALL CABINETS

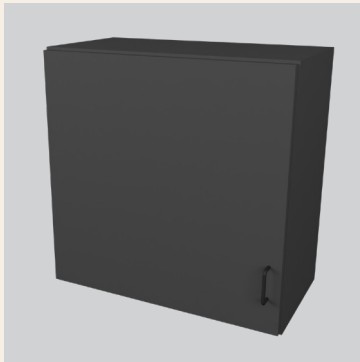


SEMCW-001

- 18"W x 12"D x 24"H
- (1) Adjustable shelf
- (1) Hinged door

SEMCW-009

- 18"W x 18"D x 24"H
- (1) Adjustable shelf
- (1) Hinged door

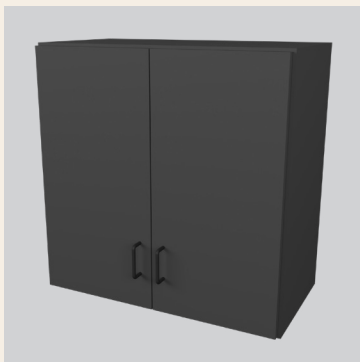


SEMCW-002

- 24"W x 12"D x 24"H
- (1) Adjustable shelf
- (1) Hinged door

SEMCW-010

- 24"W x 18"D x 24"H
- (1) Adjustable shelf
- (1) Hinged door



SEMCW-003

- 24"W x 12"D x 24"H
- (1) Adjustable shelf
- (2) Hinged doors

SEMCW-011

- 24"W x 18"D x 24"H
- (1) Adjustable shelf
- (2) Hinged doors

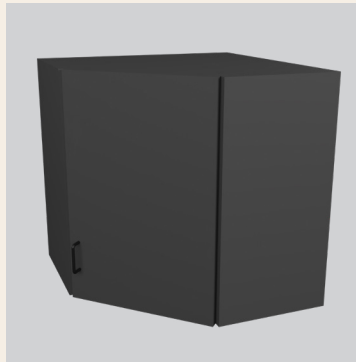


SEMCW-004

- 24"W x 12"D x 24"H
- (1) Adjustable shelf
- (1) Hinged door

SEMCW-012

- 30"W x 18"D x 24"H
- "L" Corner unit
- (1) Adjustable shelf
- (1) Hinged door



SEMCW-017

- 24"W x 12"D x 24"H
- Corner unit
- (1) Adjustable shelf
- (1) Hinged door

SEMCW-019

- 30"W x 18"D x 24"H
- Corner unit
- (1) Adjustable shelf
- (1) Hinged door

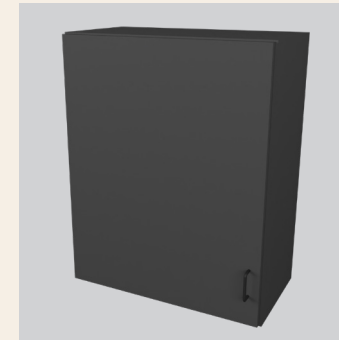


SEMCW-005

- 18"W x 12"D x 30"H
- (1) Adjustable shelf
- (1) Hinged door

SEMCW-013

- 18"W x 18"D x 30"H
- (1) Adjustable shelf
- (1) Hinged door

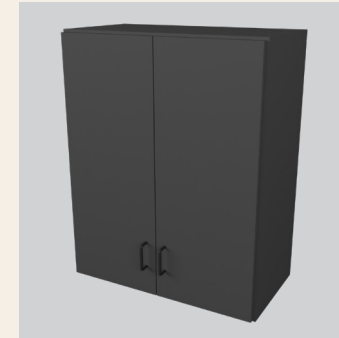


SEMCW-006

- 24"W x 12"D x 30"H
- (1) Adjustable shelf
- (1) Hinged door

SEMCW-014

- 24"W x 18"D x 30"H
- (1) Adjustable shelf
- (1) Hinged door



SEMCW-007

- 24"W x 12"D x 30"H
- (1) Adjustable shelf
- (2) Hinged doors

SEMCW-015

- 24"W x 18"D x 30"H
- (1) Adjustable shelf
- (1) Hinged door



SEMCW-008

- 24"W x 12"D x 30"H
- "L" Corner unit
- (1) Adjustable shelf
- (1) Hinged door

SEMCW-016

- 30"W x 18"D x 30"H
- "L" Corner unit
- (1) Adjustable shelf
- (1) Hinged door



SEMCW-018

- 24"W x 12"D x 30"H
- Corner unit
- (1) Adjustable shelf
- (1) Hinged door

SEMCW-020

- 30"W x 18"D x 30"H
- Corner unit
- (1) Adjustable shelf
- (1) Hinged door

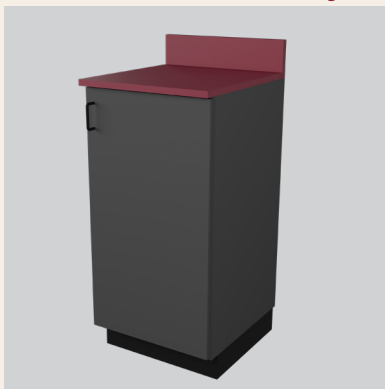
STOR-EDGE™ BASE CABINETS

Our fully modular, cost effective Stor-Edge™ Medical Base Cabinet line is functional, durable, aesthetically pleasing and designed for multiple applications. All cabinets are handcrafted in the US and are available in several wood or laminate choices. Choose to apply custom branding to carry your brand throughout your treatment area.

Our Stor-Edge™ Medical Base cabinets are designed for use with our Stor-Edge™ Medical Wall cabinets. Pair multiple cabinets together or ask about custom-built options for a fully functional treatment space. Continuous countertop and toe kick available for a run of base cabinets. Please supply a room layout when ordering.

Cabinets come standard with the same color laminate on the outside and inside of bases, as well as the doors and drawer fronts. Custom color options are available upon request. Mounting hardware not included.

36" HEIGHT CABINETS



SEM CB-001

- 18"W x 18"D x 36"H
- (1) Adjustable shelf
- (1) Hinged door

SEM CB-002

- 18"W x 24"D x 36"H
- (1) Adjustable shelf
- (1) Hinged door



SEM CB-001-1D

- 18"W x 18"D x 36"H
- (1) Adjustable shelf
- (1) Hinged door
- (1) 5.5" Drawer

SEM CB-002-1D

- 18"W x 24"D x 36"H
- (1) Adjustable shelf
- (1) Hinged door
- (1) 5.5" Drawer

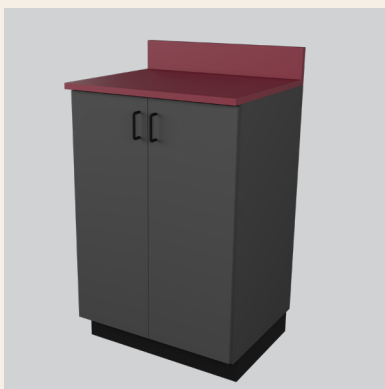


SEM CB-001-2D

- 18"W x 18"D x 36"H
- (1) Adjustable shelf
- (1) Hinged door
- (2) 5.5" Drawers

SEM CB-002-2D

- 18"W x 24"D x 36"H
- (1) Adjustable shelf
- (1) Hinged door
- (2) 5.5" Drawers



SEM CB-003

- 24"W x 18"D x 36"H
- (1) Adjustable shelf
- (2) Hinged doors

SEM CB-004

- 24"W x 24"D x 36"H
- (1) Adjustable shelf
- (2) Hinged doors



SEM CB-003-1D

- 24"W x 18"D x 36"H
- (1) Adjustable shelf
- (2) Hinged doors
- (1) 5.5" Drawer

SEM CB-004-1D

- 24"W x 24"D x 36"H
- (1) Adjustable shelf
- (2) Hinged doors
- (1) 5.5" Drawer



SEM CB-003-2D

- 24"W x 18"D x 36"H
- (1) Adjustable shelf
- (2) Hinged doors
- (2) 5.5" Drawers

SEM CB-004-2D

- 24"W x 24"D x 36"H
- (1) Adjustable shelf
- (2) Hinged doors
- (2) 5.5" Drawers



SEM CB-003-SINK

- 24"W x 18"D x 36"H
- (2) Hinged doors
- Sink kit (assembly required)

SEM CB-004-SINK

- 24"W x 24"D x 36"H
- (2) Hinged doors
- Sink kit (assembly required)



SEM CB-001-5D

- 18"W x 18"D x 36"H
- (5) 6" Drawers

SEM CB-002-5D

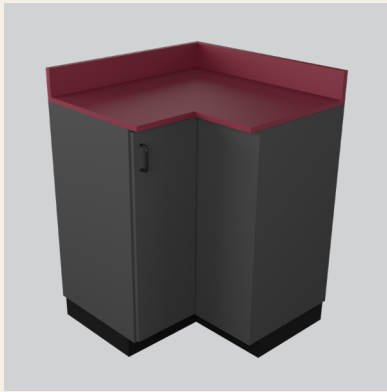
- 18"W x 24"D x 36"H
- (5) 6" Drawers

SEM CB-003-5D

- 24"W x 18"D x 36"H
- (5) 6" Drawers

SEM CB-004-5D

- 24"W x 24"D x 36"H
- (5) 6" Drawers

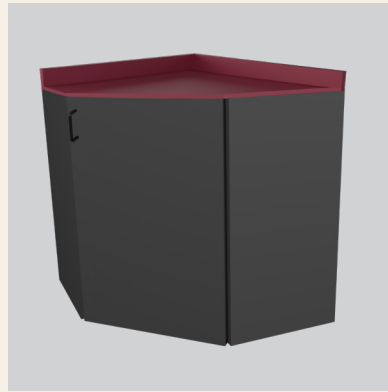


SEM CB-005

- 30"W x 18"D x 36"H
- "L" Corner unit
- (1) Adjustable shelf
- (1) Hinged door

SEM CB-008

- 36"W x 24"D x 36"H
- "L" Corner unit
- (1) Adjustable shelf
- (1) Hinged door



SEM CB-021

- 30"W x 18"D x 36"H
- Corner unit
- (1) Adjustable shelf
- (1) Hinged door

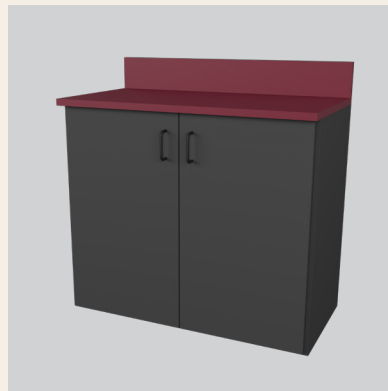
SEM CB-022

- 36"W x 24"D x 36"H
- Corner unit
- (1) Adjustable shelf
- (1) Hinged door



SC-001

- 18"W x 18"D x 30"H
- (1) Adjustable Shelf
- (1) Hinged Door
- (1) 5.5" Drawer



SC-002

- 30"W x 16"D x 30"H
- (1) Adjustable Shelf
- (2) Hinged Doors

WHY IS STOR-EDGE™ THE BEST CHOICE?

Our Stor-Edge™ Base cabinets are designed for seamless integration with our Stor-Edge cabinets. You can pair multiple cabinets together or inquire about custom-built options to create a fully functional treatment space. Available in wood or laminate finishes, each cabinet features an adjustable shelf (except in sink cabinets), 110° Euro hinges on doors, full extension drawer glides, black wire pull handles, and right or left hinges on single door cabinets. Additionally, the cabinets come with a high-pressure laminate countertop with a backsplash, a black rubber toe-kick plate, and some assembly required (the backsplash ships unattached). These features ensure your treatment space is both practical and aesthetically pleasing.





The Sport Portable Aluminum Treatment Table

Standard Features:

- Load capacity: 600 lbs.
- Table weight: 37 lbs.
- Lightweight aluminum frame
- Height range: 24-33"
- 11-Layer plywood base
- Auto-hold hinge
- 8" on center dual-end accessory ports
- 2" Firm foam cushion, black or navy upholstery
- Rounded corners
- Removable field feet
- Black carry case
- Face rest and pillow



The Flex Portable Taping Table

Standard Features:

- Load capacity: 550 lbs.
- 24"W x 47"L x 26-35"
- Table weight: 22lbs.
- Aluminum construction
- High strength and wear resistant ABS carbon fiber top with honey-comb aluminum plate
- Removable field feet
- Built in handles for easy transport
- Black carry case



Portable Sideline Table

Standard Features:

- Load capacity: 600 lbs.
- Table weight: 45 lbs.
- Height range: 29-36"
- Durable powder coat frame
- Shiatsu Cable-Lock™ system
- 2" Firm foam cushion
- Rounded corners
- Removable field feet
- Black carry case
- A2200 Shown with options

SIDELINE SOLUTIONS

ALUMA ELITE PORTABLE WORKSTATIONS



Portable Workstation

- Load capacity: 750 lbs.
- 24"W x 73"L x 32"H
- Durable aluminum frame
- Textured powder coat finish with optional accent color
- 6" Pneumatic wheels
- Stow-away handle
- Lockable storage cabinet with access from both sides
- Marine grade plastic top
- Graphics package: includes (2) logo panels on top

PRO Portable Workstation

- Load capacity: 750 lbs.
- 30"W x 78"L x 32"H
- Durable aluminum frame
- Textured powder coat finish with optional accent color
- 6" Pneumatic wheels with locking mechanisms
- Stow-away handle
- Lockable storage cabinet with access from both sides
- Marine grade plastic top
- Graphics package: includes (2) logo panels on top





MULTIPLE SIZE CONFIGURATIONS

SMARTCART™

Standard Features:

- 4', 6', & 6' PRO Load capacity: 800 lbs.
- 8' & 8' Hydration Load capacity: 1,000 lbs.
- Drawer and removable shelf configurations
- Locking, garage style doors
- Full length pass through storage
- Durable steel frame and panel construction with black powder coat
- 360° Rotating heavy duty locking wheels
- Pull handle and 1.25" receiver hitch
- Lift back cushion(s) with rounded corners
- 2" High density foam cushion
- Graphics package: includes graphics on all 4 sides (excluding Single Cooler Hydration SmartCart & Portable Hydration Cart)
- A2708 Shown with options

COMING SOON... HYDRATION SMARTCART +

The Hydration Cart is designed for robust performance and convenience, featuring flat free tires for uninterrupted mobility across diverse terrains. It's heavy duty towable steering assembly ensures smooth and easy transportation, making it ideal for various outdoor activities and events. Equipped with an auto priming pump, the cart offers hassle-free operation, priming itself automatically to ensure consistent water flow.

Standard Features:

- 74" L x 32" W x 40" H
- Flat free tires
- Heavy duty towable steering assembly
- Auto priming pump
- Push button bottle dispensing
- (3) Locking Doors



AVAILABLE IN...



4' SmartCart



6' SmartCart



6' PRO SmartCart



8' SmartCart



**8' Hydration
SmartCart**



**Single Cooler
Hydration SmartCart**



**Portable Hydration
SmartCart**

ELITE ACCESSORIES

FROM OFFICE
TO ACTION



Mobile Workstation

Standard Features:

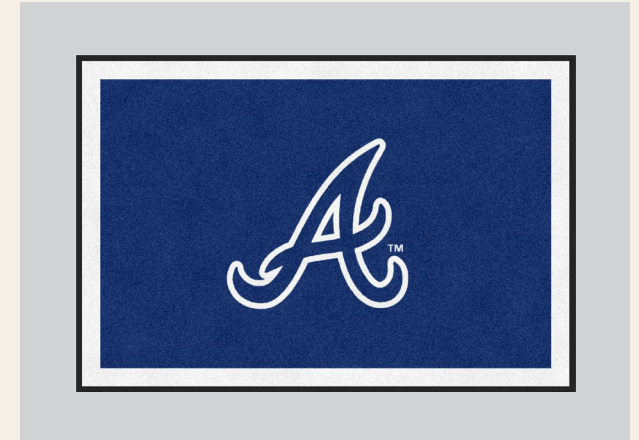
- Load capacity: 176 lbs.
- Sit or stand
- Charcoal finish on base
- Anti-collision safety feature
- Constant smooth movement and soft start/stop
- (3) Programmable memory locations
- (2) USB ports
- MW1900 Shown with options



Rolling Stools

Standard Features:

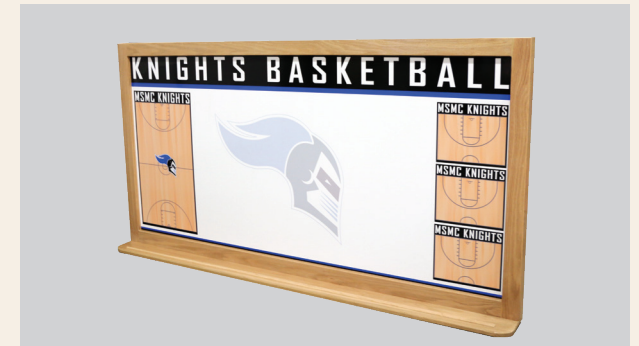
- Load capacity: 300 lb.
- Padded vinyl seat
- 3" Deluxe foam cushion
- Heavy duty casters
- Swivel stool
- Available in 18-23" or 20-26" H
- MRS Shown with options



Logo Rugs

Standard Features:

- Indoor applications only
- Permanently printed, plush nylon surface
- 100% Nitrile rubber backing for slip/skid resistance
- Fully launderable
- Choose from 150 colors (up to 25 colors per rug)



Dry Erase Board

Standard Features:

- Whiteboards available in 7 sizes
- Non-magnetic or magnetic boards
- Solid wood frame
- Custom designed graphics to fit any sport
- Ledge holds dry erase markers and erasers
- Mounting hardware not included

BRANDING YOUR ACCESSORIES

Branding your equipment to match your facility is just the cherry on top of having new gadgets. Choices range from debossed upholstery all the way to small decals. Contact us to learn all your options!

Some Branding Options:

- LOGO COVER - Logo Slip Cover (30"W x 12"H)
- LOGO DB - Deboss Logo (12"W x 12"H)
- LOGO CP - Color Edge Print (12"W x 12"H)
- Small Logo Decal (6"W x 6"H)
- Large Logo Decal (12"W x 12"H)



Waste & Towel Returns

Standard Features:

- 70 Gallon waste bin/towel return
- 24"W x 24"D x 40"H (Trayed top adds 8")
- Durable steel base
- Powder coat base
- Locking hinged front door



Bolsters

Standard Features:

- Made from high density foam and durable vinyl
- Zipper closure
- Bolster pillows provide support for ankles, knees, and neck
- Available in multiple sizes and colors



Plyometric Boxes

Standard Features:

- Load capacity: 1000 lbs.
- Hardwood plywood construction
- 3 Different height options available
- Interlocking joints
- Reinforced internal support on larger plyo box
- Boxes ship unassembled

CHECK OUT OUR OTHER BRANDS

PIVOTAL HEALTH SOLUTIONS



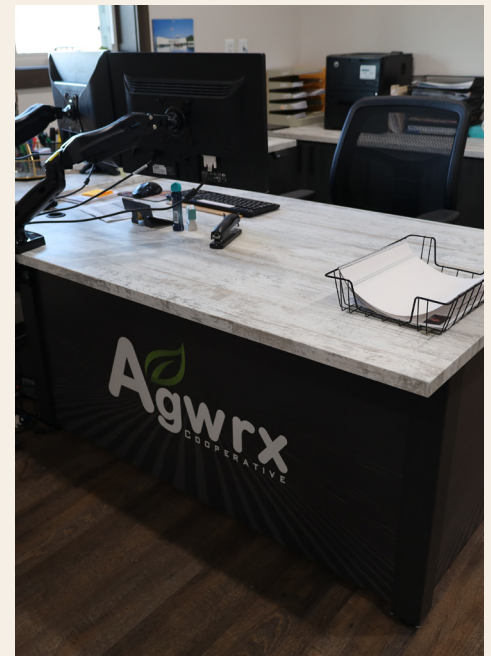
MEDICAL SOLUTIONS

From Office to Practice

Pivotal Health Solutions is known for many different practices. Ranging from Hospital equipment all the way to office decor, Pivotal Health Solutions is your one stop shop in ensuring your business has everything it needs to get started. We serve; chiropractors, massage therapists, medical professionals, corporate offices, pro team sports and more! Contact us today and learn about how we can help make your business the best.

www.PivotalHealthSolutions.com

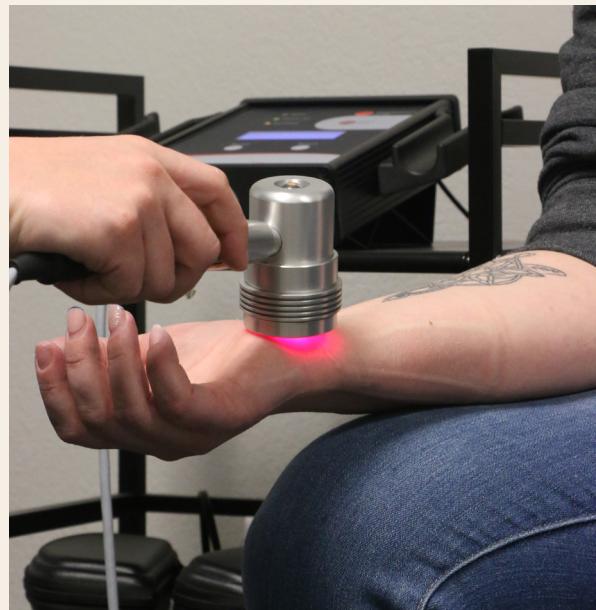
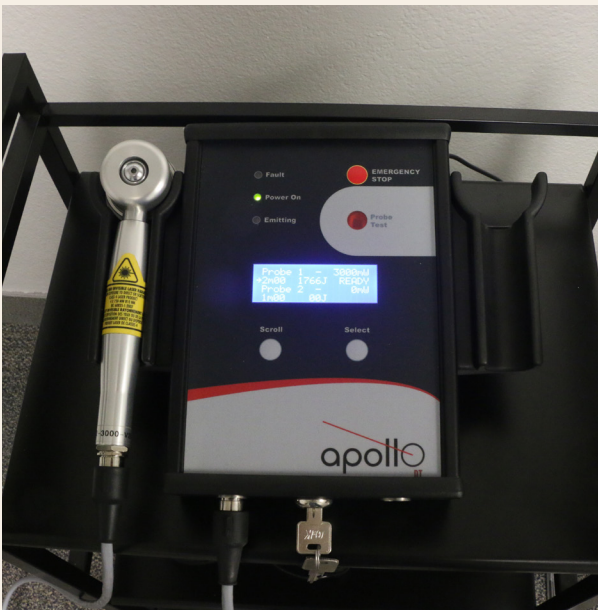
OFFICE SOLUTIONS





PHSChiropractic

Since its launch in 2009, PHS Chiropractic, a brand of Pivotal Health Solutions, has become an industry leader in beautifully designed, customizable chiropractic tables and accessories. It all started with the acquisition of our now, DOC Decompression Table, TradeMark and TradeFlex Tables in 2007 and has grown into designing and developing some of the most comprehensive chiropractic products on the market today.



PHSChiropractic
by Pivotal Health Solutions

Based in South Dakota

It's all part of the thought and care that we put into each and every PHS Chiropractic product. Made in Watertown, South Dakota, our products reflect our strong values: quality commitment, integrity, creativity, and innovation. The result is a reliable line of chiropractic tables and accessories—all offering a high level of design expertise, patented features and great value that give you the tools you need to build a successful practice.

www.PHSChiropractic.com

The World of Work is Changing.

Our mission hasn't. Our focus is on the way you work best, and we provide the resources you need to get work done. We created REV.247 to provide innovative products and solutions to help reinvent your workspace. How you work is just as important as the work you do. REV.247 provides creative products and options to help reinvent your workspace by focusing on how, where, and when you work to optimize your unique work habits. It's all about getting things done.

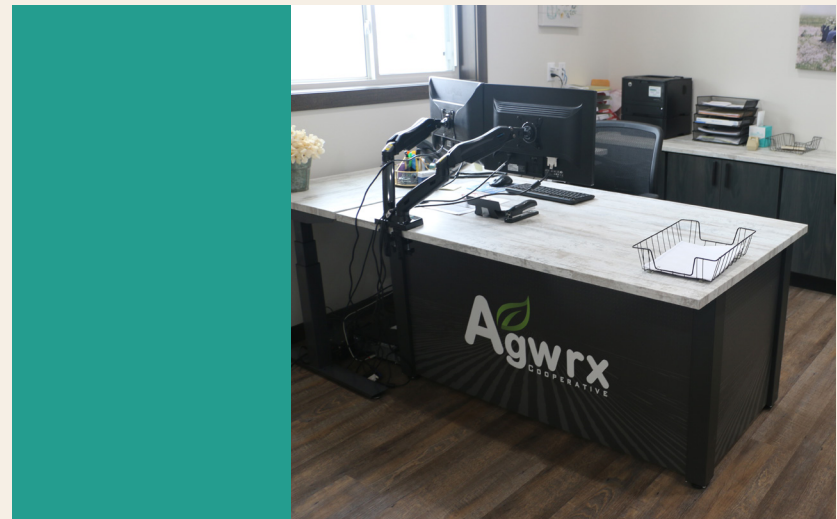
Based in Watertown, South Dakota, Pivotal Health Solutions serves as an industry-leading manufacturer of healthcare and wellness products, and our mission is to develop innovative furniture and equipment solutions that make a difference in the markets we serve.

REV247 proudly creates; Elevating Desks, Office Chairs, Stationary Tables and Mobile Workstations!

Rev. 247

WORKSPACE REINVENTED

www.Rev-247.com

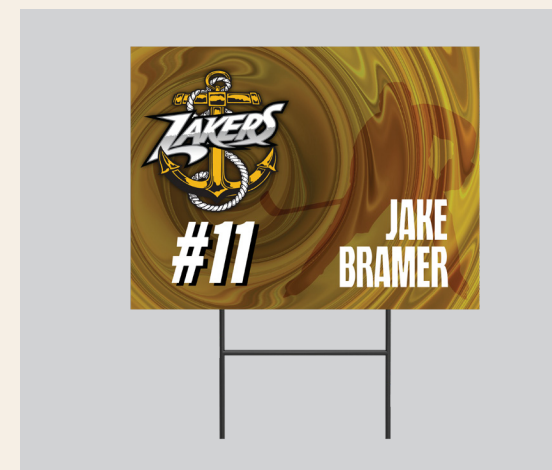




Pivotal Printing's custom-branded personalized products will boost your team's spirit and visibility! From dynamic wall wraps that change facilities to bean bag boards for game day, our selection of goods, including canvases and tumblers, is ideal for displaying your team's logo and colors.

Working with athletic trainers, Pivotal Printing understands the importance of branding in sports. Contact us today to work with our designers and ensure your team's brand is celebrated and visible in every aspect of your program. Put your logo everywhere and elevate your brand with Pivotal Printing.

www.ShopPivotalPrinting.com



COLORS AND BRANDING

BRAND YOUR
PRODUCT

Logo Slip Cover



Debossed Logo



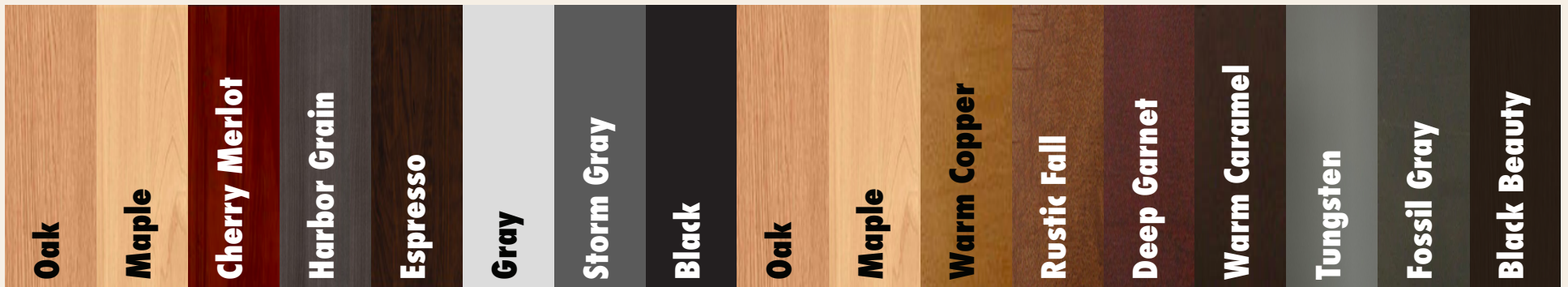
Color Edge Print Logo



Laminate:

Wood:

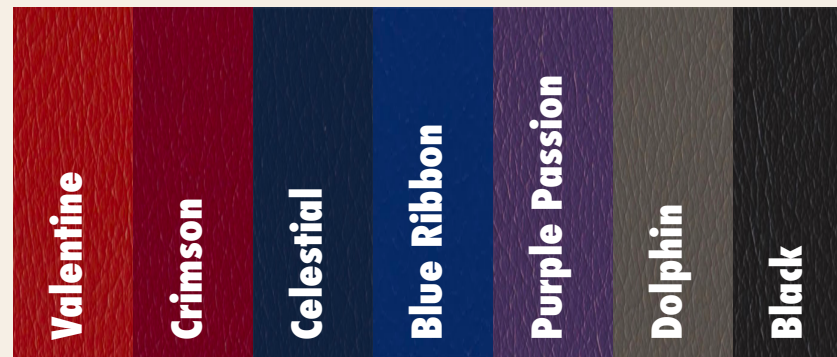
Stain:



CHOOSING YOUR COLORS

At The Athletic Edge we pride ourselves on making your product the best it can be. To do this, our sales and design team will help you through every step of finding the perfect color for your equipment. From designing panels for your treatment tables, to finding the best powdercoat color, we'll work with you to engineer the best table for your establishment.

Color Edge Print Upholstery Colors:



Upholstery Colors:



Powder Coat Colors:





SPARTANS



800.743.7738 | TEAMEDGEATHLETICS.COM

