



2021-2022

ATHLETIC TRAINING EQUIPMENT CATALOG



FEATURED CASE STUDY

Orange Coast College pg. 18

800.743.7738 | TEAMEDGEATHLETICS.COM



TABLE OF CONTENTS

VIRTUAL TRADESHOW
ROOM LAYOUTS pg. 56



The Aluma Elite Series

6

Hi-Lo Treatment Tables

20

Wood & Laminate Products

29

Mobile Solutions

50

Accessories

53

rev.
247

WORKSPACE
REINVENTED

Now Available!
pg. 58



WHAT'S NEW FOR 2021?



Aluma Elite Enclosed Taping Station - 48\"/>



AESC-008D



AESC-010D

Aluma Elite Stationary Cabinets
(AESC-008D, AESC-010D)



Mobile Workstation



Thera-P Traction Table

New Options:

Paper Roll Holder & Cutter (EPTPH01)



Mat Table Sling (LogoBB)



SmartCart Tape Drawer (A2756)



Thera-P Dual Foot Bar Control with Front Foot Bar Adder



**Follow the Athletic Edge Playbook
to outfit your athletic facility.**



It all starts here at The Athletic Edge.

We support athletic trainers, coaches and athletes because providing quality equipment for athletic care is at the cornerstone of what we do and who we care about.

We have all the tools you need to plan your next upgrade, remodel or re-design. A firm foundation is the key to a facility that lasts, and we can help you plan yours.

Build a solid foundation

Expectation is everything. Creating the foundation of your athletic facility determines the quality and character of your space. You have the vision. We have the expertise to help you every step of the way.

Set the framework

Select quality products and materials with the features you need to get the results you want. Choose from wood, laminate, aluminum or steel combined with plenty of options to meet your needs for just the right fit.

Add a finishing touch

Add a personal touch to make your facility special and unique. The Athletic Edge can help to tell your story through the colors you choose and custom branding options that will create a facility that is distinct.

Choose The Athletic Edge for the...

***office, classroom, athletic training room, locker room, mobile solutions,
and on & off the field***



WHO HAVE WE WORKED WITH?



HIGH SCHOOLS • COLLEGES • PRO TEAMS



NEW!
Enclosed Taping
Stations

Aluma Elite Enclosed Taping Stations

The Aluma Elite Enclosed Taping Stations are made from durable aluminum and comes with 1 drawer and 2 doors on each seat. Taping stations can be extended by adding additional cabinets and additional seats.

STANDARD FEATURES:

- 84.75"W x 36", 42" or 48"D x 36" or 42"H
- Load Capacity: 500 lbs.
- Durable aluminum construction
- Tough powder coat finish
- Enclosed cabinet (1 drawer and 2 doors on each seat)
- 4 Drawer center cabinet with phenolic top
- Waste bin cutout on center cabinet, garbage can supplied
- 2" Semi-firm foam cushion
- Rounded corners
- Graphics Package: includes (3) decals
- Ships as modular units (some assembly required)



The athletic training room is the focal point for your team's treatment and recovery. The Aluma Elite product line exemplifies top-of-the-line quality and craftsmanship. Such quality results in a line of aluminum equipment that can withstand everyday use and harsh environments.



*A4800
with options*



Aluma Elite Taping Stations

The Aluma Elite 2 Seat Taping Station is made from resistant aluminum and comes with standard tape holders and shelves on each taping seat. Taping stations can be extended by adding cabinets and seats.

STANDARD FEATURES:

- 84.5"W x 36" or 42"D x 36 or 42"H
- Load Capacity: 500 lbs
- Durable aluminum construction
- Tough powder coat finish
- Cabinet with 3 drawer lockable storage and phenolic top
- Tape holder and shelf on each taping seat
- Waste bin cutout on center cabinet, garbage can supplied
- 2" Semi-firm foam cushion
- Rounded corners
- Graphics Package: includes (1) school logo/name decal on each taping seat tape holder and on (1) cabinet drawer
- Ships as modular units (some assembly required)



A4205
with options

Aluma Elite Taping Tables

Our Aluma Elite Taping Table is made from sturdy aluminum and comes standard with two tape holders, an aluminum shelf for added storage capabilities on each end and custom graphics.

STANDARD FEATURES:

- 30"W x 48"D x 36"H
- Load Capacity: 500 lbs.
- Durable aluminum construction
- Tough powder coat finish
- Tape holder for each end
- Graphics Package: includes (1) school logo/name decal on each tape holder (1 on each end)
- 30" Wide seat cushion
- 2" Semi-firm foam cushion
- Rounded corners



A4200





ALUMA ELITE
by The Athletic Edge



**ST. MARY'S RYKEN
KNIGHTS**
SPORTS MEDICINE

Rolling Stool with
Full Color Graphics
(RS-LOGO)

Aluma Elite
Modality Cart
(A4203)

Aluma Elite Treatment
Table (A4201) with
Lift Back Cushion and
Logo Slip Cover

Aluma Elite Treatment Table

The Aluma Elite Treatment Table provides solid aluminum construction and an extraordinary load capacity of 750 lbs. Our tough, powder coat finish stands up to heavy usage and is available in 14 color choices with a custom graphics package included to make each table your own. Convenient tape holders are standard on each end of the shelf and provide improved functionality. An easy to clean surface makes this table ideal for athletic training rooms.

STANDARD FEATURES:

- 30"W x 78"L x 31"H
- Load Capacity: 750 lbs.
- Durable aluminum construction
- Tough powder coat finish
- Tape holder on each end and a bottom shelf (not included with enclosed cabinet option)
- Graphics Package: includes (1) school logo/name decal on each tape holder and (1) on bottom shelf
- 2" Semi-firm foam cushion
- Rounded corners

**750
POUND**

LOAD CAPACITY

**MADE IN THE
USA**

**10
YEAR**

WARRANTY
(FRAME)



A4201



A4201
with options

NEW!



**Enclosed Cabinet
with Sliding Doors on Both Sides
(A4725)**

Aluma Elite Pro Treatment Table

STANDARD FEATURES:

- 30"W x 88"L x 31"H
- Load Capacity: 750 lbs.
- Durable aluminum construction
- 6 Leg welded frame
- Tough powder coat finish
- Tape holder on each end and a bottom shelf
- Graphics Package: includes (1) school logo/name decal on each tape holder and (2) on bottom shelf
- 2" Semi-firm foam cushion
- Rounded corners



A4201-PRO
with options

6" wider than the Aluma Elite Treatment Table for larger athletes

NEW!

Aluma Elite Basic Treatment Table

Custom build your aluminum treatment table to meet your specific needs. The load capacity of 650lbs. and the welded aluminum frame make the Aluma Elite Basic Treatment Table the perfect table for your office, clinic, gym, or facility.

STANDARD FEATURES:

- 27 or 30"W x 72 or 78"L x 31"H
- Load Capacity: 650 lbs.
- Welded aluminum frame
- H-brace construction
- 2" High density foam cushion
- Rounded corners
- Tough powder coat finish



A4327LB-2772
with options

Aluma Elite Treatment Cabinets

Configure your treatment table to meet your needs. Multiple cabinet and drawer options provide ample pass-through storage accessible from both sides. Equipped with one USB/120v outlet on each side, choose the correct height by selecting a cabinet with or without elevation. The Aluma Elite Treatment Cabinet is the perfect centerpiece for your athletic training facility.

STANDARD FEATURES:

- 30"W x 78"L x 31"H
- Load Capacity: 750 lbs.
- Durable aluminum construction
- Tough powder coat finish
- Pass through storage accessible on both sides
- (1) USB/120V Outlet on each side
- Graphics Package: includes (1) large logo decal on foot end
- 2" Semi-firm foam cushion
- Rounded corners

Available
with or
without
elevation



A6000
with options



Low Height: 20.5"H
Height Range: 20.5 - 30.5"

A6190
with options

Aluma Elite Mat Table

Our Aluma Elite mat table is built to handle the harshest environments. This mat table is fabricated with a rugged aluminum frame that maintains its structure and integrity. Choose from a fixed height mat table or an elevating mat table.

STANDARD FEATURES:

- 48, 60 or 72"W x 84 or 96"L x 21"H
- Load Capacity: 1000 lbs
- Durable aluminum construction
- Tough powder coat finish
- Leveling feet
- 1.5" Semi-firm foam cushion
- Rounded corners
- Elevation option: hand control is mounted on one side
- Graphics package includes: (1) school logo/name decal on each tape holder (1 on each end) (Only available with storage shelf option)

Available with or without elevation (21" - 31"H)

New Logo Sling! (LOGO-BB)



A4520
with options



A4495-EL
with options

Aluma Elite Wall Mount Mat Table

The Aluma Elite Wall Mount Mat Table is a fold out treatment table ideal for small spaces. Three legs attach to the wall, while the two front legs and cushion fold out away from the wall when needed. A durable wall mounting plate is included (wall fasteners not included).

STANDARD FEATURES:

- 48"W x 84"L x 18"H
- Load Capacity: 600 lbs.
- Durable aluminum construction
- Tough powder coat finish
- 2" High density foam
- Wall mounting plate
- ADA Compliant

WM1001

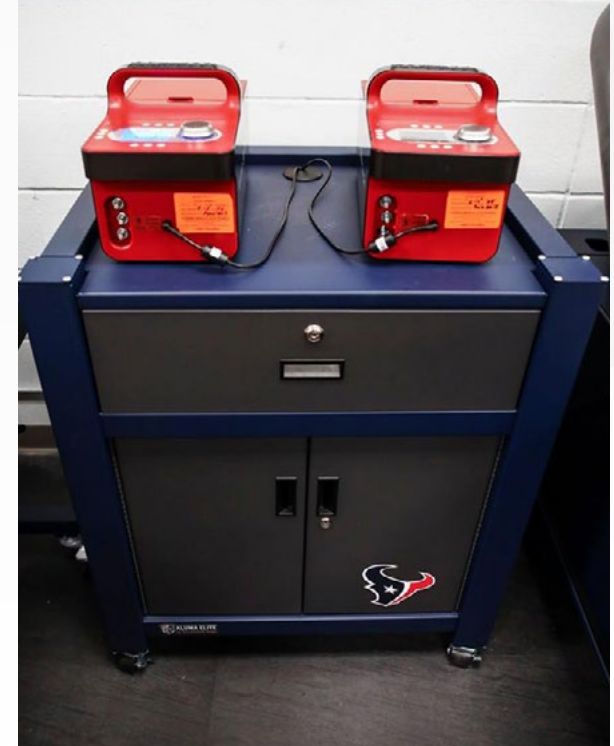


Aluma Elite Modality Carts

The Aluma Elite Modality Carts are constructed of sturdy aluminum and are offered in multiple configurations to suit your storage needs. Features include a tough powder coat finish, drawer and door key locks, electrical grommets for easy cord routing, and 2" non-marking casters. Customize your modality cart for your school, team or organization with a custom graphic, included on every cart.

STANDARD FEATURES:

- 31"W x 23"D x 38"H
- Load Capacity: 500 lbs.
- Tough powder coat finish
- 5.5" Drawer(s)
- Drawer/door key locks
- Graphics package includes: custom graphic on one door or drawer
- Durable aluminum construction
- Aluminum top with electrical grommet for easy cord routing
- 2" Non-marking casters with brakes



A4203



A4204



A4383



A4510

CONTACT US FOR A FREE CUSTOM MOCKUP:

800.743.7738 | TEAMEDGEATHLETICS.COM

Aluma Elite XL Recovery Carts

The XL Recovery Cart features mobility and storage for the Hyperice Normatec 2.0. The cart is constructed of durable aluminum and features a slide out boot rack, two drawers, locking casters, a medical grade power strip, and pop-up outlets and USB ports. Custom graphics are included on the front drawers of the cart. Normatec 2.0 Systems not included.

STANDARD FEATURES:

- 49"W x 32"D x 43"H
- Load Capacity: 500 lbs.
- Tough powder coat finish
- (1) Slide out boot rack, holds 2 pairs of Normatec leg attachments
- Built-in medical grade power strip with 6' cord
- Graphics package includes: custom graphics on 2 front drawers
- Durable aluminum construction
- (2) Drawers (20.5"W x 17.5"D x 12"H)
- 2" Non-marking casters with brakes
- Pop-up power with 3 outlets and 2 USB ports



The XL Recovery Cart features mobility and storage for the Normatec 2.0 Series.



A5010



Aluma Elite Whirlpool Tables

The Aluma Elite Whirlpool Table is built to handle the harshest environments. This table is fabricated with a rugged aluminum frame that maintains its structure and integrity, while the whirlpool table top and seats are made of a durable phenolic material that holds up in wet environments. Our whirlpool tables come standard with a shelf for added storage capabilities and are available in single or double tub configurations.

STANDARD FEATURES:

- Single: 46"W x 38.25"D x 31 or 34"H
- Double: 80.5"W x 38.25"D x 31 or 34"H
- Load Capacity: 600 lbs.
- Rugged phenolic top
- Graphics package includes: custom graphics on the 2 ends of the table
- Tough powder coat finish
- Durable aluminum construction
- Storage shelf



A4162



A4159

Aluma Elite Portable Workstations

The Aluma Elite Portable Workstation, with industry leading mobility features, is Athletic Edge's latest solution for sideline treatment and care. Made from aluminum, and complemented with a rugged, textured powder coat finish, this workstation offers an affordable and convenient solution for treating your athletes. The Aluma Elite Portable Workstation also features a stow-away handle, lockable storage cabinet that is accessible from both sides, marine grade plastic top and graphics package including two logo panels on top.

STANDARD FEATURES:

- 24"W x 73"L x 32"H
- Durable aluminum frame
- 6" Pneumatic wheels
- Marine grade plastic top
- Lockable storage cabinet with access from both sides
- Load Capacity: 750 lbs.
- Textured powder coat finish with optional accent color
- Stow-away handle
- Graphics package includes: (2) logo panels on top



Aluma Elite Pro
Portable Workstation
PW4000-PRO

**6" wider and 5" longer
than the Aluma Elite
Portable Workstation
for larger athletes**



PW4000

NEW!

Aluma Elite Wall & Base Cabinets

Aluma Elite cabinets are functional, durable and are handcrafted in the USA. Our wall cabinets are designed for use with base cabinets and can be configured for function and style with a continuous countertop design for ease of use and cleaning. Apply custom branding for a cohesive look and feel to your treatment space.

WALL CABINETS

STANDARD FEATURES:

- 30"W x 18"D x 30.5"H
- (1) Adjustable shelf for each cabinet
- Graphics package includes: custom graphic on one door
- Durable aluminum construction
- Tough powder coat finish
- Double doors
- Door key locks

BASE CABINETS

STANDARD FEATURES:

- 30"W x 24"D x 36.5"H
- 3 cabinet configurations available
- (1) Adjustable shelf in each doored cabinet
- Graphics package includes: custom graphic on one door or drawer
- Durable aluminum construction
- Tough powder coat finish
- Drawer/door key locks
- Leveling feet
- Top ships separately
- Continuous run countertop



A4885



A4803



Pair multiple cabinets together or ask about custom-built options for a fully functional treatment space.

Aluma Elite Stationary Cabinet

The Aluma Elite Stationary Cabinet is constructed of durable aluminum and features double doors with three point handle/latch mechanism and four adjustable shelves. Custom graphics are included on the front doors, and your choice of frame and accent color.

STANDARD FEATURES:

- 32"W x 21"D x 72"H
- Load Capacity: 500 lbs. (100 lbs. per shelf)
- Durable aluminum construction
- Tough powder coat finish
- Locks included
- 4 adjustable leveling feet
- Graphics package includes: custom decal on the front doors



A4302

NEW!



AESC-010D



AESC-008D

Aluma Elite Lockers

Our Aluma Elite Lockers are sure to meet the needs of your athletes with their heavy-duty aluminum construction and tough powder coat finish.



A3504



A3500

From the Athletic Training Room to the **LOCKER ROOM**



AELockers.com

ORANGE COAST COLLEGE: A CASE STUDY



Q&A with Chaz Kekipi | Certified Athletic Trainer

Groundbreaking recently took place on the \$36 million dollar Orange Coast College Kinesiology and Athletic Complex in Costa Mesa, California. The project includes a 65-meter long competition pool, covered bleachers, a 25-meter pool for adapted kinesiology classes, new locker rooms and equipment management space, spaces for cardio, aerobics and athletic training, and new office space to house the Kinesiology & Athletics division offices.

Built to Last

We built a brand-new facility at Orange Coast College and were able to select the furniture that we wanted to install. We chose the Athletic Edge Aluma Elite treatment tables because in our experience, wood tables get creaky and start to bow over time. We wanted quality tables that would last us a long time. We also appreciate the lockable drawers for storing equipment like towels, ace wraps, etc. that can be unsightly when stored on the shelf under treatment tables.

The Right Fit

When it came to selecting taping modules, we appreciated the ability to piece together the modules to customize to our space. We had not seen many taping stations that span over 40 feet so we knew we that customizing the modules would be necessary. One specific feature that we wanted was to finish the taping station with cabinets on either end. This allowed us to house our check in computers right at the entrance to the facility.



Quality & Service

We did some research of different manufacturers and products installed at athletic training facilities in the area. It was clear to us that the quality of The Athletic Edge products surpassed all other competitors. The staff was really easy to work with and we had mockups of our furniture within a few days of submitting. We also added a Hi-Lo table for our doctor's office and stools for our treatment area at the last minute. We had no issues with obtaining last minute additions.

Expert Delivery

We know that The Athletic Edge products are built to last. The color palette that we selected looks awesome! Our order was built and shipped during the shut down here in California. The only hold up we had was a result of not being able to receive the product because our campus was closed. The Athletic Edge worked with us to ensure delivery at a time when we could be on campus. Upon arrival, all furniture pieces were well-packed and we received everything without any damage. In fact, everything was packed so well that we were able to store the furniture inside the facility while things were still being worked on. Honestly, we had no idea what it would look like upon arrival, but The Athletic Edge really takes the time to protect their products with proper packaging. All products that we purchased are built for quality and durability, we are really excited to get back to work soon so we can put this stuff to the test!



Favorite Features

We love the debossed logos on all the treatment tables and taping modules. All of the graphics that we asked for turned out exactly like the mockups. I personally love that I can flop down on a treatment table with no creaking or shifting. We selected the taping module with the cutout and cabinet doors below. It easily holds all the tape that a single station requires as well as a case of each type of refill for each station. We were able to store our entire tape inventory between the cabinet and taping modules. Obviously, it is a large taping station with nine taping modules and 10 cabinet modules, but there is a lot of space and that was a big factor as we started unpacking our inventory.

Why AE?

“We really feel like the Aluma Elite products are of such high quality that we won’t have to replace them - ever.”



The Athletic Edge provides phenomenal quality, friendly service, awesome design and a great color palette. We know that our furniture is built to last. We will continue to work with The Athletic Edge on future projects and would recommend their products to anyone looking for products and service of the highest quality.

Q&A with Chaz Kekipi | Certified Athletic Trainer



LET YOUR TABLE DO THE TALKING

Hi-Lo treatment tables and cabinets elevate to a variety of heights safely lifting athletes quickly and quietly. A functional option for rehabilitation and treatment, Hi-Lo treatment tables, cabinets, and mat tables offer adjustable height, configurable tops and options, and versatile storage to suit your facility's needs and design.

Personalize your athletic training room equipment with custom branding. Add your school logo with a logo slip cover, debossed logo, or Color Edge Print to promote your brand.

Thera-P™

Electric Treatment Table

Ease of use, multiple options and a sleek but durable design make the THERA-P line of electric treatment tables the choice of athletic trainers everywhere.

Standard Features:

- Load Capacity: 650 lbs.
- 27"W x 77"L x 17-35"H
- Durable and stylish steel base (PT9020/PT9028)
- White powder coat base
- Whisper quiet lift system with single foot control pedal
- Height adjustment: 17-35"
- 27" Wide cushions in 7 different configuration options
- 2" High density foam cushions with rounded corners
- Low profile locking casters
- Head section angle range: +40° to -90° (PT1177: +35° to -45°)
- Lower extremity angle range: 0 to 65° (PT1177: 0 to 75°)
- Armrest horizontal range: 0 to 45°
- Armrest vertical range: 0 to 7"
- 7 Section configuration includes electric elevating midsection with hand control
- ADA Compliant

650
POUND

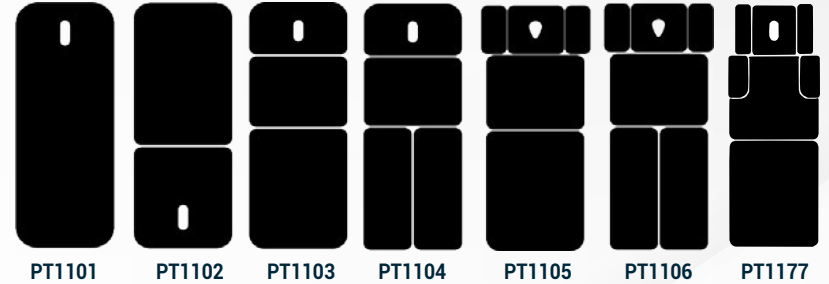
LIFTING
CAPACITY



5
YEAR

WARRANTY
(FRAME)

7 Top Configurations:



THERA-P BARIATRIC ELECTRIC TREATMENT TABLE

available with 40" wide cushion



5-Section Thera-P Table
with options



NEW!

Dual Foot Bar Control
with Front Foot Bar Adder
(S2078)



13 upholstery
choices

15 base
powder coat
choices

3-Section Thera-P Table
with options

Dual foot bar option

Multiple Cushion
Branding Options:
Slip Cover
Deboss
Color Edge Print

Sleek, carefully
designed base
branding

LAST TABLE™

(Leg & Shoulder Therapy Table)

Work smarter, not harder with the therapy table designed to handle it all. The Leg & Shoulder (LAST) Therapy Table provides a stable and supported lift back cushion and split leg elevation with drop adjustment so athletes can move through a full range of motion without having to change positions.

STANDARD FEATURES:

- 30"W x 84"L x 19-37"H
- White powder coat base
- Height adjustment: 19-37"
- Elevating back: 0 - 70°
- Leg height: 17"
- 2" High density foam cushions
- Low profile locking casters
- ADA Compliant
- Adjustable top with standard elevating base
- Whisper quiet lift system
- Single foot control pedal
- Elevating legs: 0 - 90°
- Drop legs: 0 - 90°
- Rounded corners
- Nose Hole

US Patent#
10,857,052

**650
POUND**
LIFTING
CAPACITY

**MADE IN THE
USA**

**5
YEAR**
WARRANTY
(FRAME)

"I can accomplish everything on one table from bilateral to unilateral corrective exercises/rehab to soft tissue releases, dry needling, cupping with ROM, muscle re-education with supported ROM, as well as elevation from swelling reduction during modality use. The LAST Table is truly the most versatile and ergonomic table on the market; the Swiss Army knife of tables!"

Owen Stanley, M.S., ATC, CSCS, NREMT, CIDN

**ATHLETIC TRAINER
SPOTLIGHT**

pg. 28



13 upholstery
choices

15 base
powder coat
choices

Dual foot
bar option

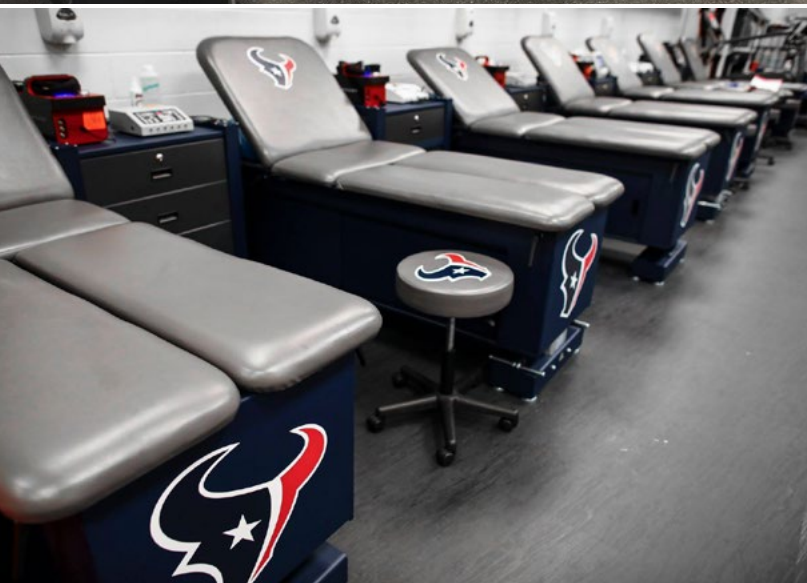
Sleek, carefully
designed base
branding

Multiple Cushion
Branding Options:
Slip Cover
Deboss
Color Edge Print

LAST Table
with options



LAST Table
with options



ET Treatment Cabinet

The ET Treatment Cabinet sets the standard in functionality, ease of use, storage and convenience. With an easy-to-operate adjustable height ranging from 29" to 44", and numerous cabinet and top options, this cabinet serves most athletic trainers' needs.

STANDARD FEATURES:

- 30"W x 83"L x 32"H (elevating 29-44"H)
- Durable metal cabinet with black powder coat
- 2" casters for easy movement
- 2" High density foam flat, seamless cushion
- Quiet and smooth lift columns elevate athletes with ease
- Door locks included on ET-101, ET-102, ET-106, and ET-107 models
- Fixed height (32") treatment cabinets also available
- Load Capacity: 500 lbs.
- Leveling feet on cabinet base
- (1) Mounted hand control
- Rounded corners

Available with or without elevation

The cushion can be upgraded to include 70° lift back and 30° split leg options on the cushion top, and you can upgrade the cabinets to include storage on one or two sides.

ET-102
with options



NEW
Aluma Elite
Treatment Cabinets
pg. 10

ME2000 Elevating Treatment Table

The ME2000 Elevating Treatment Table is a durable, yet handsome elevating table perfect to add versatility to your treatment space. The sleek white powder coat steel base and the two sliding doors on each side of the table give a polished and sophisticated look while providing storage. The height range from 24" to 36" gives athletes easy access to the table at the press of the foot pedal.

STANDARD FEATURES:

- 28"W x 77"L x 24-36"H
- Load Capacity: 400 lbs.
- Steel base with white powder coat
- (2) Sliding doors on each side of table
- (1) Foot pedal
- Flat 2" high density foam cushion with nose hole
- Rounded corners



ME2000
with options

PT2000 Bariatric Hi-Lo Mat Table

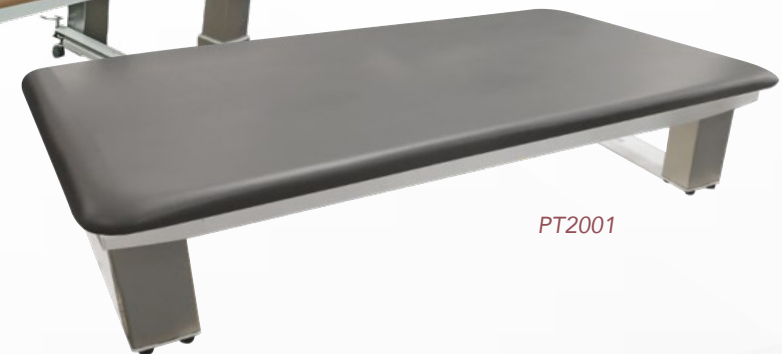
The PT2000 Bariatric Hi-Lo Mat Table is ideal for the rehabilitation setting and is available in a range of sizes to provide your facility with the option of delivering optimum care for larger patients. The table features 18-33" height range, single foot control, 1.5" high density foam flat, seamless cushion and convenient drop down casters.

STANDARD FEATURES:

- 48, 60 or 72"W x 84 or 96"L x 18-33"H
- Lifting Capacity: 1,000 lbs.
- Durable steel base with powder coat finish
- 1.5" High density foam cushion
- Rounded corners
- Single foot control
- Convenient drop down casters
- ADA Compliant



PT2000



PT2001



Aluma Elite Mat Tables
pg. 11



Keeping with Tradition: Wood & Laminate

The Athletic Edge's laminate and wood tables, taping stations and cabinets are built by the most experienced craftsmen. Our wood treatment products are perfect for keeping with the tradition of classic wood athletic training equipment. Try one of our custom stains to match the look and feel of your facility. Expect more with the quality and craftsmanship of The Athletic Edge's laminate and wood products!

Modular Taping Stations

With our full line of taping stations you can custom design and brand your training room with exclusive options you will not find anywhere else. The Athletic Edge's custom taping station branding creates a lasting impression and positive image for your team and serves as a great recruiting tool. Whether you choose a fully customized laminate top or a personalized cushion logo slip cover, we have the perfect, cost-effective solutions for your branding needs.



*2 Seat Tilt
Taping Station
with options*



TAPING STATION STANDARD FEATURES:

- Depths (Flat Taping Stations): 36", 42" or 48"
- Heights: 36" or 42"
- Load Capacity: 450 lbs. per seat
- Fully finished cabinets
- Full extension drawer glides
- Black wire pull handles
- Seamless 2" high density foam cushion
- Depths (Tilt Taping Stations): 42" or 48"
- Width: 24"W Cabinet Sections (26"W Cushions)
- Dowel and glue construction
- Laminate and wood options
- Front and side access
- 110° Euro Hinges
- Rounded corners

Individual Modular Taping Seats

The individual taping seat and cabinet configuration options offer a completely custom design for your space. All taping stations are solidly constructed and fully finished, with several laminate and wood options available. Add a comfortable tilt back cushion to any taping seat.

STANDARD FEATURES:

- Individual Taping Seat Dimensions: 24"W (26"W with Cushion) x 36", 42" or 48"D x 36" or 42"H
- Individual Center Storage Module Dimensions: 24"W x 36", 42" or 48"D x 32.75" or 38.75"H
- Load Capacity: 450 lbs.
- Fully finished cabinets
- Full extension drawer glides
- Black wire pull handles
- Seamless 2" high density foam cushion
- Dowel and glue construction
- Laminate and wood options
- Front and side access
- 110° Euro hinges
- Rounded corners



Individual Tilt Taping Seat



Individual Tilt Taping Seat with options

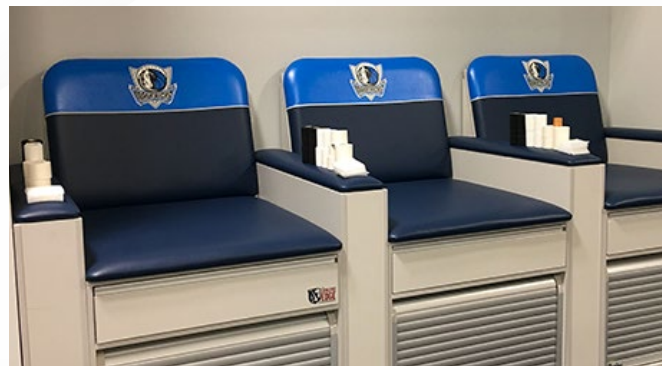
PRO Tilt Taping Stations

The PRO Tilt Taping Stations feature 36" wide cushions for larger athletes. The taping stations come with tilt back cushions, armrests on both sides of the taping seats, and ample storage space. Each taping seat comes with one full extension drawer and cabinets with two doors.

STANDARD FEATURES:

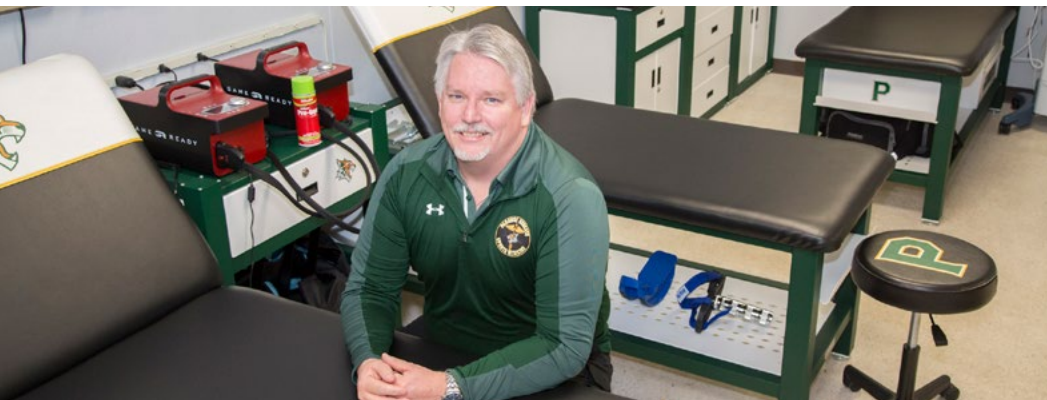
- 1 Seat: 51.5"W x 46"D x 36"H (62"H including tilt back)
- Load Capacity: 550 lbs. per seat
- Fully finished cabinets
- 2 Hinged doors
- Available in laminate or wood options
- 110° Euro hinges
- Seamless 2" high density foam cushion
- 36"W Tilt back cushion
- 1 Drawer
- Armrests on both sides
- Full extension glides on drawers
- Black wire pull handles
- Rounded corners

PRO-TTS1 with options



WE APPRECIATE ATHLETIC TRAINERS

Athletic trainers are at the forefront of health and safety and are true first responders. We appreciate their sacrifice and dedication for all that they do to minimize injuries and for the professional care they provide.





Owen Stanley

Owen Stanley, M.S., ATC, CSCS, NREMT, CIDN, has developed a strong working relationship with The Athletic Edge and shares his experience regarding AE athletic training room equipment.

Q: You have purchased Athletic Edge products while you were at South Dakota State University, Texas A & M, and the University of Kansas. What keeps you coming back to Athletic Edge?

A: "First and foremost is the high quality and function of the products Athletic Edge produces/distributes and second is the relationship and customer care that is bestowed on purchasers; it is a true partnership from start to finish. It's hard to find an all-encompassing company in our profession that also develops a relationship with each individual they do business with; but Athletic Edge is the embodiment of that company."



Jamal James

Jamal James, ATC, LAT serves as Head Athletic Trainer at Park University.

"I have been pleased with the entire process from start to finish. Athletic Edge's staff maintained a high standard of professionalism and exceeded my expectations of overall Grade A customer service. I would definitely recommend them to my other colleagues in the profession. Thanks for all of your help. FYI - everybody from the president of the university to the student athletes loves our new athletic training room."



NEW!

Edge Options Treatment Cabinets

New Configurable Treatment Cabinets Available!

CAB-160



*CAB-160
with options*

CAB-170



*CAB-170
with options*

Our line of cabinets meet the functional needs of athletic trainers and therapists, with ample storage plus 60° lift back and 45° split leg options. The CAB-160 and CAB-170 Edge-Options Treatment Cabinets feature a customizable three section cabinet. Apply your team or organization logo to the top and to the cabinet exterior.

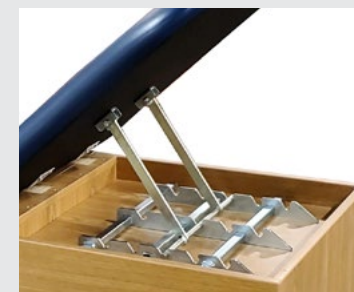
CAB-160 STANDARD FEATURES:

- 30"W x 78"L x 31"H
- Load Capacity: 600 lbs.
- Open, customizable 3 section cabinet
- Pass through storage accessible on both sides
- Available in wood or laminate finishes
- 2" High density foam cushion
- Rounded corners
- Black wire pull handles
- 4" Toe kick
- 110° Euro hinges on doors
- (1) Adjustable shelf in each section with doors

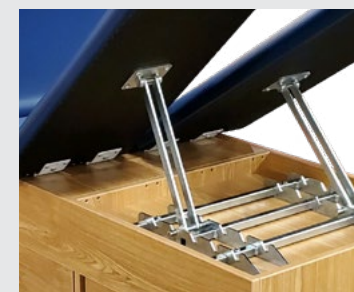
CAB-170 STANDARD FEATURES:

- 30"W x 78"L x 31"H
- Load Capacity: 600 lbs.
- Customizable 3 section cabinet with solid back
- Available in wood or laminate finishes
- 2" High density foam cushion
- Rounded corners
- Black wire pull handles
- 4" Toe kick
- 110° Euro hinges on doors
- (1) Adjustable shelf in each section with doors

**New Option
on all treatment
cabinets with
lift back or split
leg options**



CAB-LB-NGS
60° Lift Back Cushion
(Ratchet Style with No Gas Shock)



CAB-RSL
45° Split Leg Cushion
(Ratchet Style)

CAB-010

The CAB-010 model features closed storage for a neater presentation, with a three section cabinet with one adjustable shelf in each section and six hinged doors on one side.

STANDARD FEATURES:

- 30"W x 78"L x 31"H
- Load Capacity: 600 lbs.
- 3 Section cabinet
- (6) Hinged doors on front with a solid back
- (1) Adjustable shelf in each section
- Available in wood or laminate finishes
- 110° Euro hinges on doors
- 2" High density foam cushion
- Rounded corners
- Black wire pull handles



CAB-020

The CAB-020 model features an open three section cabinet with one adjustable shelf in each section.

STANDARD FEATURES:

- 30"W x 78"L x 31"H
- Load Capacity: 600 lbs.
- 3 Section cabinet, open on both sides
- (1) Adjustable shelf for each section
- Available in wood or laminate finishes
- 2" High density foam cushion
- Rounded corners



CAB-030

The CAB-030 model is our convertible taping cabinet that features a three section cabinet with two taping sections, a removable top seat for the middle section, six hinged doors and three drawers.

STANDARD FEATURES:

- 32"W x 74"L x 36"H
- Load Capacity: 600 lbs.
- 3 Section convertible taping cabinet
- (6) Hinged doors on front with a solid back
- (3) Drawers
- (1) Adjustable shelf in each section
- (2) Taping sections
- (1) Removable seat in middle section
- Available in wood or laminate finishes
- 110° Euro hinges on doors
- Full extension glides on middle drawer
- 2" High density foam cushions
- Rounded corners
- Black wire pull handles



See our website for more configurations
www.teamedgeathletics.com

CAB-050

The CAB-050 model is a two section cabinet with sliding doors, ideal for storing larger items.

STANDARD FEATURES:

- 30"W x 78"L x 31"H
- Load Capacity: 600 lbs.
- 2 Section cabinet
- (2) Sliding doors on front with a solid back
- (1) Adjustable shelf in each section
- Available in wood or laminate finishes
- 2" High density foam cushion
- Rounded corners
- Black wire pull handles



*CAB-050
with options*

CAB-070

The CAB-070 model is a three section cabinet that features a combination of open and closed storage, with four hinged doors on each side, open storage under foot end and one adjustable shelf in each section.

STANDARD FEATURES:

- 30"W x 78"L x 31"H
- 3 Section cabinet
- Open storage under foot end
- (1) Adjustable shelf in each section
- 110° Euro hinges on doors
- Available in wood or laminate finishes
- Load Capacity: 600 lbs.
- (4) Hinged doors on each side
- Rounded corners
- Black wire pull handles
- 2" High density foam cushion



*CAB-070
with options*

CAB-090N Treatment & Recovery Cabinet

Custom designed for Normatec 2.0 with the high quality and superior craftsmanship of The Athletic Edge tables, the CAB-090N Treatment and Recovery Cabinet offers innovative features.

STANDARD FEATURES:

- 30"W x 85"L x 32"H
- Load Capacity: 600 lbs.
- Dual extension drawer (22"L x 17"W x 17"H) accommodates the Normatec product line by Hyperice
- Dual extension boot rack (44"L x 24"W) accommodates 2 pairs of Normatec leg attachments
- Boot rack contains 2 trays (24"L x 11"W x 4.5"H) that hold the Normatec 2.0 Series
- Available in wood or laminate finishes
- 2" High density foam
- Wood cabinets available in natural finish or black stain
- Rounded corners
- 55° Gas shock lift back and 45° split legs
- Graphics package with Normatec by Hyperice and Athletic Edge branding
- Add your school/organization logo above the pull out drawers for no additional charge



*CAB-090N
with options*

*CAB-090N
with options*

*CAB-090N
with options*

See our website for more configurations
www.teamedgeathletics.com

CAB-100-LST

Leg & Shoulder Treatment (LAST) Cabinet

The unique design of the CAB-100-LST allows for patient positioning and optimal range of motion to perform a wide range of activities using one stable platform. To maximize the efforts of physical therapists, athletic trainers, and clinicians, this cabinet is a must for each rehabilitation practice or athletic training room.

STANDARD FEATURES:

- 30"W x 84"L x 34"H
- 3 Section cabinet
- Pass through open storage on foot end
- 70° Mechanical friction lock elevating back
- Available in wood only
- 2" High density foam, seamless cushion
- Black wire pull handles
- Drop out leg/shoulder area for improved range of motion
- Load Capacity: 500 lbs.
- (4) Hinged doors on each side
- (1) Fixed height shelf in each section
- 90° Split leg elevation
- 110° Euro hinges on doors
- Rounded corners
- Nose hole

US Patent#
10,857,052



*CAB-100-LST
with options*

CAB-120

Convertible Taping/Treatment Cabinet

The CAB-120 Treatment Cabinet is a multi-purpose treatment cabinet and taping station, featuring a three section cabinet with pass through storage on sides with adjustable shelves, a taping station end with a 55° lift back with manual gas shock, two hinged doors and an open cubby.

STANDARD FEATURES:

- 27"W x 78"L x 34"H
- Load Capacity: 600 lbs.
- 3 Section cabinet
- Open pass through storage on both sides
- Tape station seat on one end
- Open cubby and (2) Hinged doors
- (1) Adjustable shelf in each section
- Available in wood or laminate finishes
- 110° Euro hinges on doors
- 2" High density foam cushions
- Rounded corners
- 55° Lift back with manual gas shock
- Black wire pull handles



*CAB-120
with options*



*CAB-120
with options*

See our website for more configurations
www.teamedgeathletics.com

PT9081 & PT9082

Hip & Knee Flexion Treatment Cabinets

The flexible split leg design and concealed storage solutions of the PT9081 and PT9082 treatment cabinets provide athletic trainers and therapists with versatility and functionality all in one.

PT9081 STANDARD FEATURES:

- 30"W x 81.5"L x 31"H
- Load Capacity: 600 lbs.
- 3 Section cabinet, open on both sides
- (1) Adjustable shelf for each section
- Available in wood or laminate finishes
- 2" High density foam cushion
- Lift back cushion
- Mechanical friction lock elevating back: 0 - 70°
- Elevating legs: 0 - 90°
- Hip & knee flexion
- Rounded corners

PT9082 STANDARD FEATURES:

- 30"W x 81.5"L x 31"H
- Load Capacity: 600 lbs.
- 3 Section cabinet
- (6) Hinged doors on front with a solid back
- (1) Adjustable shelf in each section
- Available in wood or laminate finishes
- 110° Euro hinges on doors
- 2" High density foam cushion
- Lift back cushion
- Mechanical friction lock elevating back: 0 - 70°
- Elevating legs: 0 - 90°
- Hip & knee flexion
- Rounded corners
- Black wire pull handles



PT9081
with options

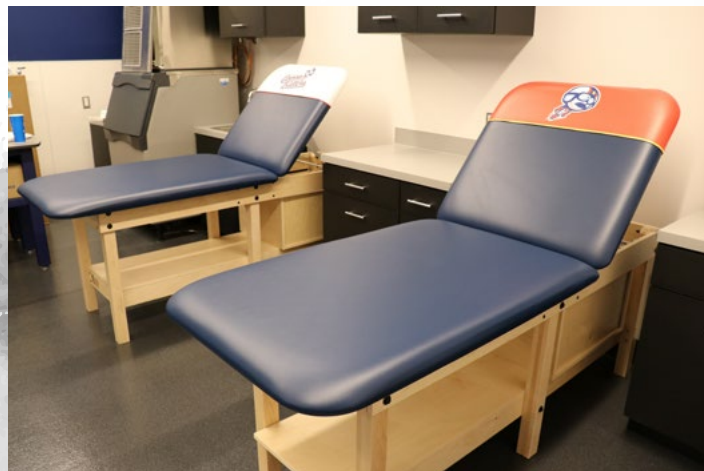
PT9082



800.743.7738 | TEAMEDGEATHLETICS.COM

Edge Sport Wood Treatment Table

Custom build your wood treatment table to meet the specific needs of your athletic training room. Each table comes standard with solid hardwood legs and base, H-brace construction, thick 3/4" plywood top, comfortable 2" high density foam cushion, softly rounded corners and dual-bolted leg assembly that folds down for easy shipping. Make it your own by adding length or width, shelves or a cabinet that can be mounted on either end. Patient-friendly customizations include a nose hole and 70° manual lift back with 6 position elevation.



4-LEG EDGE SPORT STANDARD FEATURES:

- Configurations available:
 - 27 or 30" W
 - 72 or 78" L
 - 31" H
 - Flat top or lift back
- Load Capacity: 550 lbs.
- Solid hardwood H-brace construction
- 2" High density foam cushion
- Rounded corners
- Dual-bolted leg assembly that folds down for convenient shipping



TESS-2772
with options



FESS-6L



FESS-6L
with options



NEW!
EPTPH01- Paper Roll Holder Option
for Wood Treatment Tables

6-LEG EDGE SPORT STANDARD FEATURES:

- 30"W x 78"L x 31"H
- Load Capacity: 800 lbs.
- Solid hardwood 6 Leg H-brace construction
- 2" High density foam cushion
- Rounded corners
- Triple-bolted leg assembly
- Bottom shelf for added storage

PRO 6 Leg Edge Sport Treatment Table

STANDARD FEATURES:

- 30"W x 84"L x 31"H
- Load Capacity: 800 lbs.
- Solid hardwood 6 Leg H-brace construction
- 2" High density foam cushion
- Rounded corners
- Triple-bolted leg assembly
- Bottom shelf for added storage



FESS-6L-PRO
with options

**6" wider than the Edge Sport
Wood Treatment Tables for
larger athletes**

800.743.7738 | TEAMEDGEATHLETICS.COM

Essential Wood Treatment Table

Meet the specific needs of your practice with the many options available with the Essential Wood Treatment Table. Make it your own by adding length, width, shelves or a cabinet that can be mounted on either end.

STANDARD FEATURES:

- 27 or 30"W x 72 or 78"L x 31"H
- Load Capacity: 500 lbs.
- Solid poplar hardwood frame
- H-brace construction
- 2" High density foam cushion
- Rounded corners
- Dual-bolted folding leg assembly for convenient shipping



*TEWT-2772
with options*

NSK Wood Treatment Table

Designed with the athletic trainer in mind, our NSK Wood Treatment Table offers a 6-leg partial H-Brace construction on the foot end with two shelves on the head end for ample storage. This "No Shin Kick" design provides the athletic trainer extra room while providing treatment.

STANDARD FEATURES:

- 30"W x 78"L x 31"H
- Load Capacity: 800 lbs.
- Solid hardwood partial 6 Leg H-brace construction
- (2) Shelves on head end for added storage
- 2" High density foam cushion
- Rounded corners
- Triple-bolted leg assembly



*TESS-NSK100
with options*

Hip & Knee Flexion Treatment Table

The flexible split leg design of this solid hardwood treatment table makes it extremely functional for multiple treatment positions. Each padded leg cushion can be manually adjusted to the desired hip and knee flexion positions making treatments easier and more comfortable for the athlete and athletic trainer.

STANDARD FEATURES:

- 30"W x 81.5"L x 32"H
- Load Capacity: 800 lbs.
- Dual brace support
- Rounded corners
- Elevating back: 0 - 70°
- Bottom shelf for added storage
- Solid hardwood construction
- 2" High density foam cushion
- Manual lift back
- Elevating legs: 0 - 90°
- Hip/Knee flexion



PT9080

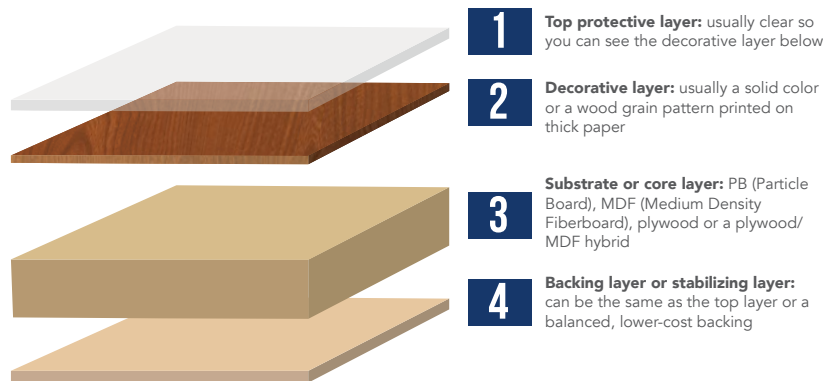
SELECTING THE RIGHT WOOD/LAMINATE FOR ATHLETIC EDGE FURNITURE

Panel Construction

Athletic Edge wood/laminate furniture and lockers are constructed of paneled material with decorative overlays on the outside faces and edges of the panels. The material primarily consists of ¾" thick panels with several different types of overlay and core panel materials.

Our paneled materials are available in two main categories: real wood veneers and synthetic laminate products.

Internal construction of a typical laminated panel product.



- 1 Top protective layer:** usually clear so you can see the decorative layer below
- 2 Decorative layer:** usually a solid color or a wood grain pattern printed on thick paper
- 3 Substrate or core layer:** PB (Particle Board), MDF (Medium Density Fiberboard), plywood or a plywood/MDF hybrid
- 4 Backing layer or stabilizing layer:** can be the same as the top layer or a balanced, lower-cost backing

Water/Moisture

Natural wood fibers are susceptible to water damage and discoloration. All of our core materials are susceptible to water damage and should not be used in wet applications. For damp or moist environments, some treatments are available that can be added to the core material during manufacturing that will hinder or slow water damage.

Core Material Choices

We offer 4 primary options for core material:



A. Particle Board (PB) – This is the lowest cost solution for core material. PB is a blend of natural wood fiber (coarse sawdust) mixed with adhesive and pressed tightly to form a panel.

B. Medium Density Fiberboard (MDF) - MDF is an engineered wood composite that is similar to particle board, but is much denser and stronger than particle board.

It uses more 'glue' (adhesives and binders) and finer, more controlled size of wood particles. It holds screws better and it's more dimensionally stable than PB.

C. Plywood – True plywood is made of layers or bands of thinly sliced wood glued together to form a thick panel. Typically, a plywood core will alternate the grain direction of each layer of wood. This yields the best strength and minimizes warp that is common to natural wood products.

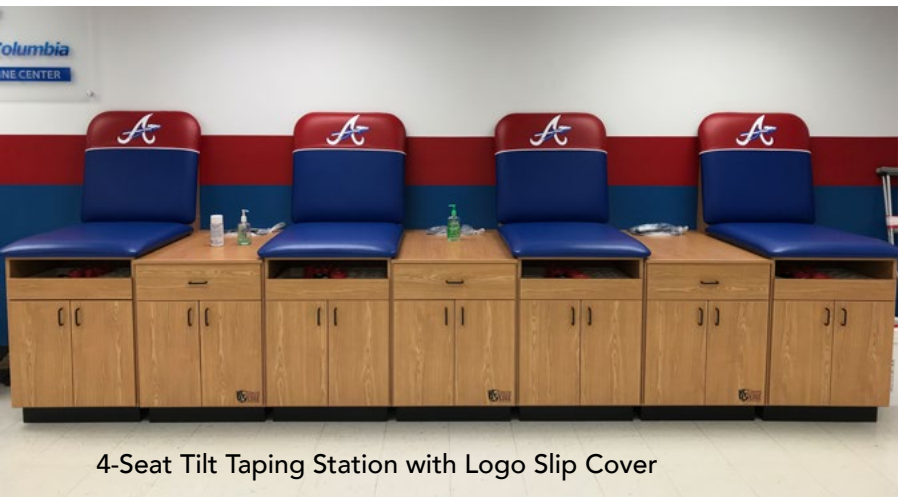
D. Another core material choice is a hybrid product that uses plywood and MDF combined. This material is called **Classic Core or Armor Core**, and employs MDF cross bands within the wood layers. This our standard core material for all hardwood veneer products.

Cost vs. Durability

Two of the most important factors for material selection are initial cost and long-term durability. Generally, our lowest cost materials use Low Pressure Laminates (LPL) with a Particle Board Core. These are also the lowest durability materials and will not withstand as much wear and tear as other material before the quality is degraded. Furthermore, it will not retain screws as well as more dense materials, such as Medium Density Fiber Board (MDF). Generally, our highest cost materials are High Pressure Laminates (HPL) with a hybrid core. The protective and decorative layers of HPL products are much thicker than LPL products. These materials will provide the longest lasting and most durable products.



4 Leg Edge Sport Wood Mat Table with Logo Sling



4-Seat Tilt Taping Station with Logo Slip Cover



Aluma Elite Dual Whirlpool Table



Treatment Cabinet with Lift Back and Logo Slip Cover



Rolling Stool

Specialty Treatment Tables

Our specialty treatment tables are designed for a classroom setting with multiple configurations of lab tables and desks that can be utilized as treatment tables. The tables can also be custom branded with personalized cushions or full color custom laminate table tops.



FESS-LAB-6L
with options

Classroom/Lab Treatment Table

The Classroom/Lab Treatment Table is a multi-purpose desk and treatment table perfect for a clinic or classroom setting. When not in use, the pad hangs from the front of the table.

STANDARD FEATURES:

- 27"W x 78"L x 32"H
- Load Capacity: 600 lbs.
- 31.5" Clearance for stools (without cubbies)
- 6 Leg construction
- Solid hardwood frame
- Flat, laminate top

NEW!

**Add casters
to your table!**



FESS-LAB

Combination Lab Table/Desk

The Combination Lab Table/Desk is a desk or treatment table ideal for classroom training.

STANDARD FEATURES:

- 27"W x 72"L x 32"H
- Load Capacity: 450 lbs.
- 4 Leg construction
- 24" Clearance for stools
- Solid hardwood frame
- Flat, laminate top



Wall Mount Folding Treatment Table

The Wall Mount Folding Treatment Table is a fold out treatment table ideal for small spaces. A durable wall mounting plate is included (wall fasteners not included).

STANDARD FEATURES:

- 24"W x 72"L x 31"H
- Load Capacity: 450 lbs.
- 2" High density foam cushion
- Durable wall mounting plate
- Solid hardwood frame
- Optional nose hole

Stor-Edge™ Modality Carts

Small with ample storage, our wood or laminate modality carts come in standard and deluxe versions, with multiple drawer and shelf options that keep tools and treatment supplies close so athletic trainers and therapists can work more efficiently.

STANDARD FEATURES:

- 2" Swivel nylon casters
- Full extension glides
- Shipped fully assembled
- Wood or laminate
- (except for casters)



SMC-001
24"W x 18"D x 32"H



SMC-002 with options
24"W x 18"D x 32"H



SMC-003
18"W x 18"D x 30"H



SMC-004
18"W x 18"D x 30"H



SMC-005
18"W x 18"D x 30"H



SMC-006
18"W x 18"D x 30"H



SMDC-001
24"W x 18"D x 38"H



SMC-002
24"W x 18"D x 38"H



SMC-003 with options
24"W x 18"D x 38"H



SMC-005
19"W x 23"D x 38"H

SMC-006
24"W x 23"D x 38"H



SMDC-007 with options
15"W x 20"D x 32"H



**CHECK OUT OUR WEBSITE FOR
ADDITIONAL CONFIGURATIONS OR
CONTACT US FOR A CUSTOM CART**

**TEAMEDGEATHLETICS.COM
800.743.7738**

Stor-Edge™ Stationary Cabinets

Our stylish stationary cabinet systems provide multi-purpose storage in a variety of options, including base and tall cabinets, shelves or drawers and more - ideal for storing gear and other supplies inside an athletic training room or office.

STANDARD FEATURES:

- Available in wood or laminate finishes
- Cabinets available with or without exterior double doors
- Full extension glides on all drawers
- Black wire pull handles
- Heavy duty overlay hinges
- Weight racks and J-hooks provided where applicable
- Cabinets ship fully assembled
- All cabinets must be fastened to the wall (fasteners not included)



SC-003D
with options



SC-003



(3) SC-007 with options



NEW!
Weights & Weight Kits
now available!

**Theraband Soft
Weight Set**

**Original Cuff Wrist
& Ankle Weights**



SC-003

- 32"W x 23"D x 76"H
- (3) 8" Drawers
- (3) Adjustable shelves
- Slatwall hanger board
- (6) J-Hooks
- **SC-003D:** SC-003 features with (2) Exterior doors



SC-004

- 32"W x 23"D x 76"H
- (5) Adjustable shelves
- **SC-004D:** SC-004 features with (2) Exterior doors



SC-006

- 32"W x 23"D x 76"H
- (4) 11" Drawers
- (2) Fixed shelves
- (6) Adjustable shelves
- **SC-006D:** SC-006 features with (2) Exterior doors



SC-007

- 16.5"W x 18"D x 84"H
- (5) Fixed cubby storage
- Single Cubby: 15"W x 18"D x 15"H
- Sold individually; single units can be combined to expand storage.
- Hardware included.



SC-008

- 32"W x 23"D x 76"H
- (8) Band dispenser bars
- (2) weight hanger racks (10 weights per rack)
- Slatwall hanger board
- (12) J-Hooks
- **SC-008D:** SC-008 features with (2) Exterior doors



SC-009

- 32"W x 23"D x 76"H
- (5) Adjustable shelves
- Slatwall hanger board
- (6) J-Hooks
- **SC-009D:** SC-009 features with (2) Exterior doors



SC-010

- 32"W x 23"D x 76"H
- Bottom storage compartment
- Slatwall hanger board
- (12) J-Hooks
- **SC-010D:** SC-010 features with (2) Exterior doors



SC-011

- 32"W x 23"D x 76"H
- (1) Adjustable shelf
- (1) Clothes rod
- (2) 11" Drawers
- Slatwall hanger board
- (6) J-Hooks
- **SC-011D:** SC-011 features with (2) Exterior doors



SC-012

- 32"W x 23"D x 76"H
- (3) Adjustable shelves
- (6) Storage cubbies
- Slatwall hanger board
- (12) J-Hooks
- **SC-012D:** SC-012 features with (2) Exterior doors



SC-013

- 32"W x 23"D x 76"H
- (2) Adjustable shelves
- (1) Clothes rod
- Slatwall hanger board
- (6) J-Hooks
- **SC-013D:** SC-013 features with (2) Exterior doors



SC-014

- 32"W x 23"D x 76"H
- (2) Adjustable shelves
- (4) 8" Drawers
- Slatwall hanger board
- (6) J-Hooks
- **SC-014D:** SC-014 features with (2) Exterior doors



SC-015

- 48"W x 23"D x 76"H
- (8) Adjustable shelves
- (4) 8" Drawers
- **SC-015D:** SC-015 features with (2) Exterior doors

Stor-Edge™ Multi-Purpose Carts

See our website for more configurations and Portable Mirrors!
www.teamedgeathletics.com

Crafted of solid wood or laminate for durability, our Stor-Edge Multi-Purpose Carts are custom built. Choose from many model choices for the right solution to organizing your weights, resistance bands and other tools and equipment.

STANDARD FEATURES:

- Available in wood or laminate finishes
- Full extension glides on all drawers
- Black wire pull handles
- 110° Euro hinges on doors
- Weight racks and J-hooks provided where applicable
- 4" Heavy duty casters
- Cabinets ship fully assembled, except for casters

***Carts shown with accessories (not included).
 Photos do not represent weight kits.**



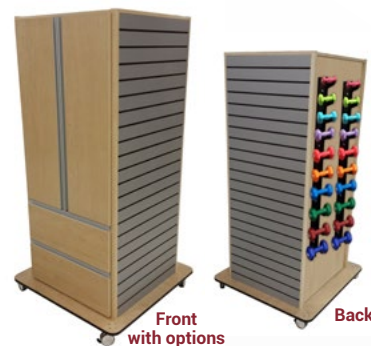
SR-001	
<ul style="list-style-type: none"> • 30"W x 18"D x 72"H • Front: slatwall & band dispensers • Back: slatwall • Sides: weight racks • (9) 4" Double hooks • (10) J-Hooks 	<p>OPTIONS:</p> <p>SR-WK1 - Weight Kit 1</p> <ul style="list-style-type: none"> • (2) 1-10 lbs. Dumbbell sets • (1) 16 pc. Hugger weight set • (1) 5 Rep. resistance band set <p>SR-MI-001 - Mirror</p> <ul style="list-style-type: none"> • 19.75"W x 65.5"H (back side)



SR-006	
<ul style="list-style-type: none"> • 36"W x 36"D x 73"H • Front: Doors with (2) shelves & (2) 10" Drawers • Flush mount handles • Back: weight racks • Sides: slatwall • (4) 4" Double hooks • (12) J-Hooks 	<p>OPTIONS:</p> <p>SR-WK3 - Weight Kit 3</p> <ul style="list-style-type: none"> • (2) 1-10 lbs. Dumbbell sets • (1) 16 pc. Hugger weight set • (1) 5 Rep. resistance band set • (1) 1-3 lbs. Weight bar set <p><i>*Only available in wood with flush mount handles</i></p>



SR-008	
<ul style="list-style-type: none"> • 46"W x 26"D x 43"H • Front: (5) 18"W drawers & (1) 18"W door • Back: slatwall • Left side: weight racks • Right side: storage compartment • (4) 4" Double hooks • (10) J-Hooks 	<p>OPTIONS:</p> <p>TSFO-FHD</p> <ul style="list-style-type: none"> • Flush mount handles on doors <p>TSFO-FHLD</p> <ul style="list-style-type: none"> • Flush mount handles on large doors



SR-009	
<ul style="list-style-type: none"> • 36"W x 36"D x 73"H • Front: doors with (2) Shelves & (2) 10" drawers • Back: weight racks • Sides: slatwall • (4) 4" Double hooks • (10) J-Hooks 	<p>OPTIONS:</p> <p>SR-WK3 - Weight Kit 3</p> <ul style="list-style-type: none"> • (2) 1-10 lbs. Dumbbell sets • (1) 16 pc. Hugger weight set • (1) 5 Rep. resistance band set • (1) 1-3 lbs. Weight bar set <p>SR-MI-009 - Mirror</p> <ul style="list-style-type: none"> • 26.5"W x 65.5"H (back side) <p>TSFO-FHDR</p> <ul style="list-style-type: none"> • Flush mount handles on drawers <p>TSFO-FHLD</p> <ul style="list-style-type: none"> • Flush mount handles on large doors



SR-010	
<ul style="list-style-type: none"> • 72"W x 25.5"D x 33"H • Front: (2) sliding doors • Back & sides: solid 	<p>OPTIONS:</p> <p>TSFO-FHD</p> <ul style="list-style-type: none"> • Flush mount handles on doors

*Carts shown with accessories (not included).
Photos do not represent weight kits.



Front



Back

SR-002

- 30"W x 24"D x 61"H
- Front: doors with (3) shelves
- Back: slatwall
- Sides: weight racks
- (4) 4" Double hooks
- (10) J-Hooks

OPTIONS:

- SR-WK2 - Weight Kit 2**
- (2) 1-10 lbs. Dumbbell sets
- (1) 16 pc. Hugger weight set
- TSFO-FHLD**
- Flush mount handles on large doors



Front



Back

SR-003

- 30"W x 18"D x 60"H
- Front: slatwall
- Back: weight racks
- Right side: band dispensers
- Left side: storage compartment
- (4) 4" Double hooks
- (10) J-Hooks

OPTIONS:

- SR-WK3 - Weight Kit 3**
- (2) 1-10 lbs. Dumbbell sets
- (1) 16 pc. Hugger weight set
- (1) 5 Rep. resistance band set
- (1) 1-3 lbs. Weight bar set



Front



Back

SR-004

- 24"W x 24"D x 61"H
- Front: band dispensers
- Back: slatwall
- Sides: weight racks
- (3) 4" Double hooks
- (6) J-Hooks

OPTIONS:

- SR-WK4 - Weight Kit 4**
- (2) 1-10 lbs. Dumbbell sets
- (2) 1-5 lbs. Dumbbell sets
- (1) 5 Rep. resistance band set



Front



Back

SR-005

- 32"W x 32"D x 72"H
- Front: cubbies, drop down desk, (3) 8" drawers
- Back: band dispensers & slatwall
- Left side: weight racks
- Right side: mirror
- (4) 4" Double hooks
- (12) J-Hooks

OPTIONS:

- SR-WK3 - Weight Kit 3**
- (2) 1-10 lbs. Dumbbell sets
- (1) 16 pc. Hugger weight set
- (1) 5 Rep. resistance band set
- (1) 1-3 lbs. Weight bar set
- TSFO-FHDR**
- Flush mount handles on drawers



Front



Front



Front



Front



Front



Front



Back

SR-011

- 50"W x 24"D x 65"H
- (4) Cubbies
- (4) Double hooks in each compartment
- (2) Drawers
- (4) 4" Casters

OPTIONS:

- TSFO-FHDR**
- Flush mount handles on drawers

SR-012

- 48"W x 20"D x 64"H
- (4) Cubbies
- (4) Double hooks in each compartment
- (2) Drawers
- 4" Toe-kick

OPTIONS:

- TSFO-FHDR**
- Flush mount handles on drawers

SR-013

- 26"W x 24"D x 65"H
- (2) Cubbies
- (4) Double hooks in each compartment
- (1) Drawer
- (4) 4" Casters

OPTIONS:

- TSFO-FHDR**
- Flush mount handles on drawers

SR-014

- 24"W x 20"D x 64"H
- (2) Cubbies
- (4) Double hooks in each compartment
- (1) Drawer
- 4" Toe-kick

OPTIONS:

- TSFO-FHDR**
- Flush mount handles on drawers

SR-015

- 34.5"L x 22.5"W x 36"H
- (4) 4" Heavy duty casters
- Solid wood
- Top tray
- Open storage on lower shelf

OPTIONS:

- SR-WK5**

SR-016

- 32"W x 32"D x 72"H
- Front: Cubbies, (4) 8" Drawers
- Back: Band Dispensers, Slatwall, & Bar Box Storage Compartment
- Left Side: Weight Racks
- Right Side: Slatwall

OPTIONS:

- SR-WK3 - Weight Kit 3**
- (2) 1-10 lbs. Dumbbell sets
- (1) 16 pc. Hugger weight set
- (1) 5 Rep. resistance band set
- (1) 1-3 lbs. Weight bar set
- TSFO-FHDR**
- Flush mount handles on drawers

Stor-Edge™ Medical Cabinets

Our fully modular, cost-effective Stor-Edge™ Medical Cabinet line is functional, durable, aesthetically pleasing and designed for multiple applications. All cabinets are handcrafted in the US and are available in several wood or laminate choices. Choose to apply custom branding to carry your brand throughout your treatment area.



WALL CABINET STANDARD FEATURES:

- Available in wood or laminate finishes
- 1 Adjustable shelf in each cabinet
- 110° Euro hinges on doors
- Black wire pull handles
- Right or left hinges available on single door cabinets
- Mounting hardware not supplied

BASE CABINET STANDARD FEATURES:

- Available in wood or laminate finishes
- (1) Adjustable shelf in each doored cabinet (Not available in sink cabinets)
- 110° Euro hinges on doors
- Full extension drawers glides
- Black wire pull handles
- Right or left hinges available on single door cabinets
- High pressure laminate countertop with backsplash
- Black toe-kick plate
- Some assembly required (Backsplash ships not attached)



Wall Cabinets, Base Cabinets and Cabinet Groupings Available.

MEDICAL WALL CABINETS - 24" H CONFIGURATIONS:

SEMCW-001:

- 18"W x 12"D x 24"H
- (1) Adjustable Shelf
- (1) Hinged Door

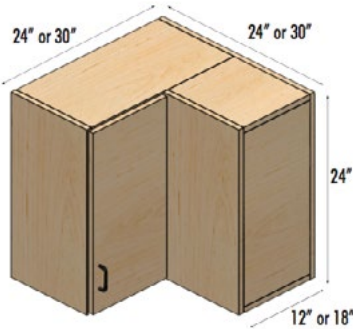


SEMCW-009:

- 18"W x 18"D x 24"H
- (1) Adjustable Shelf
- (1) Hinged Door

SEMCW-004:

- 24"W x 12"D x 24"H
- "L" Corner Unit
- (1) Adjustable Shelf
- (1) Hinged Door

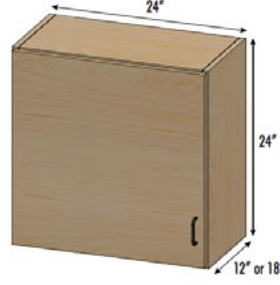


SEMCW-012:

- 30"W x 18"D x 24"H
- "L" Corner Unit
- (1) Adjustable Shelf
- (1) Hinged Door

SEMCW-002:

- 24"W x 12"D x 24"H
- (1) Adjustable Shelf
- (1) Hinged Door

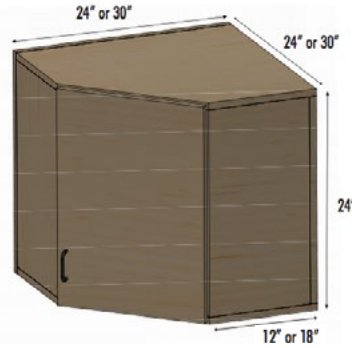


SEMCW-010:

- 24"W x 18"D x 24"H
- (1) Adjustable Shelf
- (1) Hinged Door

SEMCW-017:

- 24"W x 12"D x 24"H
- Corner Unit
- (1) Adjustable Shelf
- (1) Hinged Door

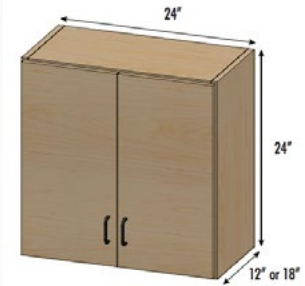


SEMCW-019:

- 30"W x 18"D x 24"H
- Corner Unit
- (1) Adjustable Shelf
- (1) Hinged Door

SEMCW-003:

- 24"W x 12"D x 24"H
- (1) Adjustable Shelf
- (2) Hinged Doors



SEMCW-011:

- 24"W x 18"D x 24"H
- (1) Adjustable Shelf
- (2) Hinged Doors

30" H CONFIGURATIONS:

SEMCW-005:

- 18"W x 12"D x 30"H
- (1) Adjustable Shelf
- (1) Hinged Door



SEMCW-013:

- 18"W x 18"D x 30"H
- (1) Adjustable Shelf
- (1) Hinged Door

SEMCW-006:

- 24"W x 12"D x 30"H
- (1) Adjustable Shelf
- (1) Hinged Door

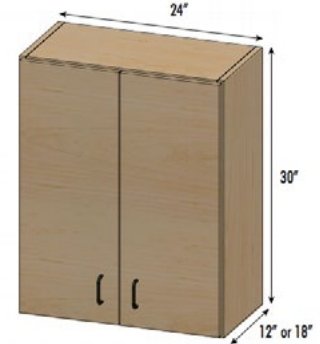


SEMCW-014:

- 24"W x 18"D x 30"H
- (1) Adjustable Shelf
- (1) Hinged Door

SEMCW-007:

- 24"W x 12"D x 30"H
- (1) Adjustable Shelf
- (2) Hinged Doors

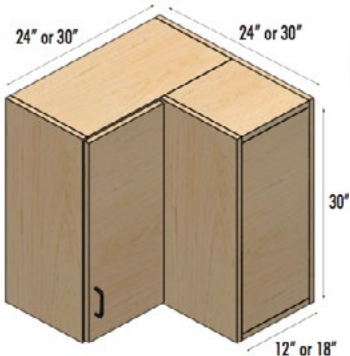


SEMCW-015:

- 24"W x 18"D x 30"H
- (1) Adjustable Shelf
- (2) Hinged Doors

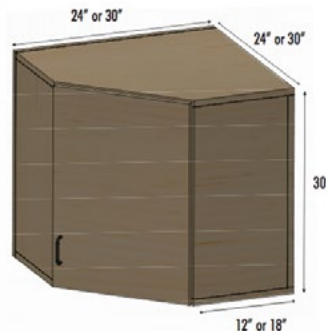
SEMCW-008:

- 24"W x 12"D x 30"H
- "L" Corner Unit
- (1) Adjustable Shelf
- (1) Hinged Door



SEMCW-018:

- 24"W x 12"D x 30"H
- Corner Unit
- (1) Adjustable Shelf
- (1) Hinged Door



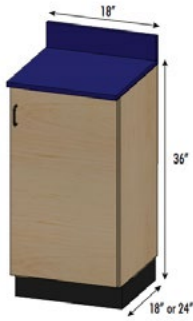
SEMCW-020:

- 30"W x 18"D x 30"H
- Corner Unit
- (1) Adjustable Shelf
- (1) Hinged Door

MEDICAL BASE CABINETS:

SEM CB-001:

- 18"W x 18"D x 36"H
- (1) Adjustable Shelf
- (1) Hinged Door



SEM CB-002:

- 18"W x 24"D x 36"H
- (1) Adjustable Shelf
- (1) Hinged Door

SEM CB-001-1D:

- 18"W x 18"D x 36"H
- (1) Adjustable Shelf
- (1) Hinged Door
- (1) 5.5" Drawer



SEM CB-002-1D:

- 18"W x 24"D x 36"H
- (1) Adjustable Shelf
- (1) Hinged Door
- (1) 5.5" Drawer

SEM CB-001-2D:

- 18"W x 18"D x 36"H
- (1) Adjustable Shelf
- (1) Hinged Door
- (2) 5.5" Drawers

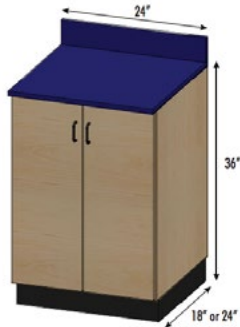


SEM CB-002-2D:

- 18"W x 24"D x 36"H
- (1) Adjustable Shelf
- (1) Hinged Door
- (2) 5.5" Drawers

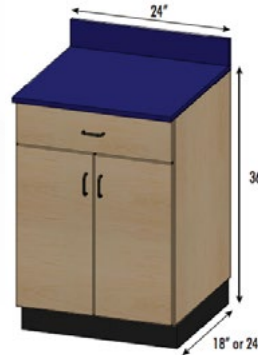
SEM CB-003:

- 24"W x 18"D x 36"H
- (1) Adjustable Shelf
- (2) Hinged Doors



SEM CB-003-1D:

- 24"W x 18"D x 36"H
- (1) Adjustable Shelf
- (2) Hinged Doors
- (1) 5.5" Drawer



SEM CB-003-2D:

- 24"W x 18"D x 36"H
- (1) Adjustable Shelf
- (2) Hinged Doors
- (2) 5.5" Drawers



SEM CB-004:

- 24"W x 24"D x 36"H
- (1) Adjustable Shelf
- (2) Hinged Doors

SEM CB-004-1D:

- 24"W x 24"D x 36"H
- (1) Adjustable Shelf
- (2) Hinged Doors
- (1) 5.5" Drawer



SEM CB-004-2D:

- 24"W x 24"D x 36"H
- (1) Adjustable Shelf
- (2) Hinged Doors
- (2) 5.5" Drawers



SEM CB-003-Sink:

- 24"W x 18"D x 36"H
- (2) Hinged Doors
- Sink Kit (Assembly Required)

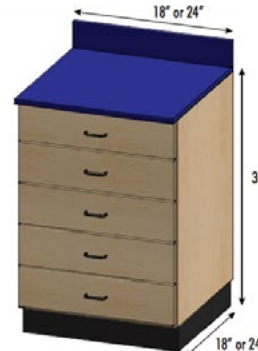


SEM CB-004-Sink:

- 24"W x 24"D x 36"H
- (2) Hinged Doors
- Sink Kit (Assembly Required)

SEM CB-001-5D:

- 18"W x 18"D x 36"H
- (5) 6" Drawers

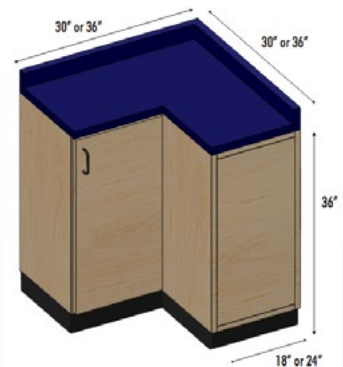


SEM CB-002-5D:

- 18"W x 24"D x 36"H
- (5) 6" Drawers

SEM CB-005:

- 30"W x 18"D x 36"H
- "L" Corner Unit
- (1) Adjustable Shelf
- (1) Hinged Door



SEM CB-003-5D:

- 24"W x 18"D x 36"H
- (5) 6" Drawers

SEM CB-008:

- 36"W x 24"D x 36"H
- "L" Corner Unit
- (1) Adjustable Shelf
- (1) Hinged Door

SEM CB-021:

- 30"W x 18"D x 36"H
- Corner Unit
- (1) Adjustable Shelf
- (1) Hinged Door



SEM CB-022:

- 36"W x 24"D x 36"H
- Corner Unit
- (1) Adjustable Shelf
- (1) Hinged Door

CONTINUOUS RUN OPTIONS:

- Continuous countertop
- Continuous toe-kick (Black Laminate)



STANDARD COUNTERTOP CHOICES:

	Brittany Blue		Royal Blue
	Navy Blue		Red
	Burgundy		Hunter Green
	North Sea Grey		Slate Grey
	Black		

Edge Sport Wood Mat Tables

Designed to support the busy athletic trainer and multiple athletes, solid hardwood construction means our Edge Sport Wood Mat Table is built for strength and stability during athletic trainer-assisted exercise and other treatments. Our 4 Leg Mat table comes standard with solid hardwood on the base frame, four legs and supports with a thick plywood top construction. The mat table also features a layer of comfortable 1.5" high density foam with softly rounded corners and triple-bolted leg assembly for extra durability.

STANDARD FEATURES:

- 4 leg: 48 or 60"W x 72 or 84"L x 19"H
- 6 leg: 48, 60 or 72"W x 84 or 96"L x 19"H
- Load Capacity: 450 lbs. (4 leg)
- Load Capacity: 700 lbs. (6 leg)
- Solid hardwood frame and 4 legs
- 3/4" Plywood top
- 1.5" High density foam cushion
- Rounded corners
- Triple-bolted leg assembly
- ADA Compliant



MAT-4872-4L



MAT-4884-6L

Logo Sling option now available!



Logo-BB

Wall Mount Mat Tables

The Wall Mount Mat Table is a fold out mat table ideal for small spaces. The table is constructed of solid hardwood with a flat 1.5" high density foam cushion with softly rounded corners. A platform attaches to the wall in the back, while the three front legs and cushion fold out away from the wall when needed. The triple-bolted leg assembly adds extra durability.

STANDARD FEATURES:

- 48 or 60"W x 84"L x 19"H
- Load Capacity: 450 lbs.
- Solid hardwood frame and legs
- 3/4" Plywood top
- 1.5" High density foam flat cushion
- Rounded corners
- Triple-bolted leg assembly
- 10" Depth when folded
- ADA Compliant



NEW!

Deluxe Stretch Table

Our Deluxe Stretch Table is perfect for Stretch Therapists to perform passive, resistive, PNF, dynamic, and manual muscle manipulation for their patients. The 2" high density foam is durable and will prevent patients from sinking into the cushion, which limits their flexibility. The 700 lb load capacity allows both the therapist and patient to be full weight bearing on the table with no issues on the stability of the table.

STANDARD FEATURES:

- 34"W x 78"L x 22"H
- Load Capacity: 700 lbs.
- Available in wood or laminate
- Glue and dowel construction
- 2" High density foam cushion
- Rounded corners
- Black toe-kick plate
- Storage area on one side
- Divided cubby section (one end only)
- One adjustable shelf in center section of divided end cubby



DST-7834

A TALE OF TWO CAMPUSES: CAMPBELLVILLE UNIVERSITY

Athletic Edge products gave us the right combination of style, professionalism, and branding that we were looking for. The Aluma Elite line was specifically appealing to us for its customization options and its durability.”



Joshua Hawkins, MS, ATC

When Joshua Hawkins, MS, ATC at Campbellsville University realized he needed help with a training room renovation, he knew just who to turn to. Hawkins has worked with The Athletic Edge since 2018, and he shares his experience and results of working with AE.

The Tigers purchased two Aluma Elite Whirlpool Tables in the summer of 2018 and gradually added Aluma Elite Treatment Tables, Rolling Stools, Tilt Taping Stations, Aluma Elite Modality Carts, an Edge Sport Treatment Table and Aluma Elite Treatment Tables. By Fall 2019, the Tigers had a renovated space with a fresh, modern look to better serve their student athletes.



Playing Favorites

“Our favorite Athletic Edge product is the Aluma Elite Treatment Table,” stated Hawkins. “Replacing our old treatment tables with these allowed us to modernize the look of our athletic training room while at the same time providing us with a much needed upgrade to better serve our student-athletes.” When asked what Athletic Edge product every athletic trainer/ athletic training room needs, Hawkins voted for taping stations. “Taping stations are extremely customizable down to the design, drawer configuration, and branding options. They can be made to fit any need or personal styling preferences.”

The Campbellsville University Harrodsburg Story

Meanwhile, less than fifty miles away at the Campbellsville University Harrodsburg campus, the Pioneers were looking for greater function and additional storage space in their athletic training room. They chose to purchase a two-seat Tilt Taping Station and two CAB-010 Treatment Cabinets to address their needs. According to Assistant Athletic Trainer Kaitlin Niemiec, "The treatment tables with the cabinets underneath are a fantastic multi-use product. I can store supplies and equipment without taking up extra space."

If she could choose, Niemiec would select taping stations as her favorite Athletic Edge product. "The taping station is my favorite product because it provides style and function. Whenever someone comes into the athletic training room, they always comment on how nice the tables look. I love the height for taping and the drawers that provide quick access to the supplies I need."

For her product recommendation, Niemiec chose treatment tables. "Treatment tables are the most utilized piece of equipment in any athletic training room. I chose to add the elevated leg options and it's been used a lot in the short time I've had them."



Kaitlin Niemiec, ATC

"I know of other schools that used The Athletic Edge for their taping stations and tables and I was very impressed with the customization of the equipment.

I love the custom Pioneers logo. I've gotten countless compliments from coaches, athletes and even recruits on how nice the logos look. We're a new athletics program, so having our logo shown off brings pride to this program."





Mobile Solutions

Designed for easy transport and set up, The Athletic Edge has the solutions you need for convenient sideline evaluation and treatment of athletes. The Aluma Elite Portable Workstation is a versatile option that can be used in the classroom and is weather-proof for outside use. Add a Sport Portable Aluminum Treatment Table with its lightweight yet rugged design for on-the-go treatment, and for game day and practice needs, choose a SmartCart to maximize mobile taping, evaluation and treatment needs with built-in storage and hydration needs all in one.

SmartCarts

The SmartCart™ is durable, functional and convenient. With its heavy-duty 1.25" tube steel frame, 14 gauge panel steel construction and ample storage, this product is sure to meet all your mobile taping, evaluation and/or treatment needs. Athletic Edge's SmartCarts are offered in many sizes to meet your game day and practice needs.

STANDARD FEATURES:

- 4', 6' & 6' PRO Load Capacity: 800 lbs.
- 8' & 8' Hydration Load Capacity: 1,000 lbs.
- Drawer and removable shelf configurations
- Locking, garage style doors
- Full length pass through storage
- Durable steel frame and panel construction with black powder coat
- 360° Rotating heavy duty locking wheels
- Pull handle and 1.25" Receiver hitch
- Lift back cushion(s)
- 2" High density foam cushion
- Rounded corners
- Graphic package including graphics on all 4 sides (excluding Single Cooler Hydration SmartCart & Portable Hydration Cart)

**Available in multiple configurations:
4', 6', 6' PRO, 8',
8' Hydration,
Single Cooler
Hydration and
Portable Hydration Cart**

Single Cooler Hydration SmartCart with options

NEW!

Portable Hydration SmartCart





4' SmartCart



6' SmartCart



6' PRO SmartCart
with options



8' SmartCart



8' Hydration SmartCart

Portable Treatment Tables

For the mobile athletic trainer, our portable tables are lightweight and tough. Our portable treatment tables feature a folding design for easy storage, setup and portability.



I9390AE

The Sport Portable Aluminum Treatment Table

STANDARD FEATURES:

- 30"W x 73"L x 24-33"H
- Load Capacity: 600 lbs.
- Table weight: 37 lbs.
- Lightweight aluminum frame
- Height range: 24-33"
- 11-Layer plywood base
- Auto-hold hinge
- 8" on center dual end accessory ports
- 2" Firm foam cushion, black upholstery
- Rounded corners
- Removable field feet
- Black carry case
- Face rest and pillow



A2200 with options

Portable Sideline Table

STANDARD FEATURES:

- 30"W x 72"L x 29-36"H
- Load Capacity: 600 lbs.
- Table weight: 45 lbs.
- Durable powder coat frame
- Height range: 29-36"
- Shiatsu Cable-Lock™ system
- 2" Firm foam cushion
- Rounded corners
- Removable field feet
- Black carry case



PW4000

Aluma Elite Portable Workstation

STANDARD FEATURES:

- 24"W x 73"L x 32"H
- Load Capacity: 750 lbs.
- Durable aluminum frame
- Textured powder coat finish with optional accent color
- 6" Pneumatic wheels
- Stow-away handle
- Lockable storage cabinet with access from both sides
- Marine grade plastic top
- Graphics package includes (2) logo panels on top



PW4000-PRO

Aluma Elite PRO Portable Workstation

STANDARD FEATURES:

- 30"W x 78"L x 32"H
- Load Capacity: 750 lbs.
- Table weight: 37 lbs.
- Durable aluminum frame
- Textured powder coat finish with optional accent color
- 6" Pneumatic wheels
- Stow-away handle
- Lockable storage cabinet with access from both sides
- Marine grade plastic top
- Graphics package includes (2) logo panels on top

800.743.7738 | TEAMEDGEATHLETICS.COM

Rolling Stools

Our Rolling Stools combine comfort with control thanks to a 3" deluxe seat cushion, a five-star base (plastic or metal) with heavy-duty casters and pneumatic controls with multiple seat height adjustments. Give your stool the EDGE with custom branding.

STANDARD FEATURES:

- Load Capacity: 300 lb.
- Padded vinyl seat
- 3" Deluxe foam cushion
- Heavy duty casters
- Swivel stool



MRS

RS



LOGO



DEBOSS



COLOR EDGE PRINT

BENCHES, METAL STOOLS AND WOOD STOOLS

also available. See our website: teamedgeathletics.com



Logo Rugs

Athletic Edge's Logo Rugs add the perfect finishing touch to any indoor facility. The rug is constructed with static dissipative 100% nylon carpet bonded to 100% premium rubber for superior grease and oil resistance for years of worry-free service.

STANDARD FEATURES:

- Indoor applications only
- Permanently printed, plush nylon surface
- 100% Nitrile rubber backing for slip/skid resistance
- Fully launderable
- Choose from 150 colors



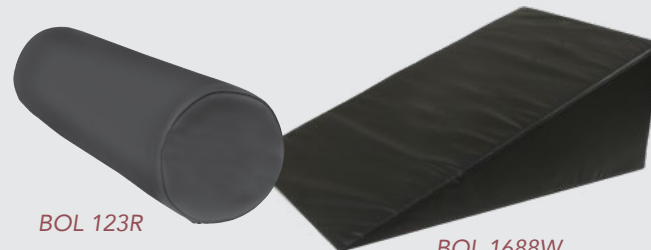
NEW!

Bolsters

Our bolsters are durable and easy-to-clean. Each bolster is a multipurpose product that can be used to position ankles, knees, or neck. Available in multiple sizes, The Athletic Edge's bolsters are ideal for providing comfortable support for your athlete.

STANDARD FEATURES:

- Made from high density foam and durable vinyl
- Zipper closure
- Bolster pillows provide support for ankles, knees, and neck
- Available in multiple sizes and colors



BOL 123R

BOL 1688W

Plyometric Boxes

Our 3 in 1 wooden plyometric boxes are built out of hardwood plywood, and designed for strength and endurance training. Each box provides 3 different height options for you to choose from, simply flip the box to a different side and you're ready to go.

STANDARD FEATURES:

- Load Capacity: 1000 lbs.
- Hardwood plywood construction
- 3 Different height options available
- Pre-drilled holes
- Interlocking joints
- Reinforced internal support on larger plyo box
- Sanded edges for safety
- Boxes ship unassembled



PLYOBOX-162024



FMST Tools

Fluid Motion Soft Tissue Tools

Fluid Motion Soft Tissue Tools can take myofascial manipulation and mobilization to the next level in your practice. An ambidextrous design of the two tools enables you to work over all surfaces of the body quickly and easily. FMST Tools help reduce scar tissue from old injuries/surgeries and achieve greater results with pain control, joint and muscle flexibility.



FEATURES:

- Custom molded, non-slip thumb grips create maximum angular pressure without over use by the therapist.
- Ambidextrous design: no more switching through multiple tools to find the right edge or angle. Both tools are designed to be used on both sides and on every surface for increased compatibility of treatment on multiple body areas.

DIMENSIONS:

- F1: 10" L x 3.5" W
- F2: 5.25" L x 3.25" W



Apollo Desktop Laser System

Built for the busy office and clinic, our two-channel Apollo Desktop Laser Unit offers both convenience and power: With two probes, clinicians can work on two patients at the same time or two areas on the same patient. Customize your unit with a variety of powerful probes for deep tissue or more delicate treatment. The desktop unit features a user-friendly LCD display with probe status and treatment times (ranging from 10 seconds to 2 minutes), built-in safety and fault detection software and a built-in power test to assess probe output.

STANDARD FEATURES:

- 9"W x 11.25"D x 4.5"H
- 2 Channel desktop unit with choice of probe (5,000mW, 4,000mW, 3,000mW or 500mW)
- Heavy-duty construction for office and clinic environments
- Probe holders on both sides of the unit that can accommodate two probes and both right and left handed practitioners
- Elevated face for easy viewing and control
- Two timers allow you to treat 2 patients at the same time



Smart Step

Wellness Mats

Our line of high-performance Smart Step Wellness Mats deliver the comfortable support you need while you work, play or exercise. Each mat features extra-durable construction, non-slip tops and bottoms, and an easy-to-clean, antimicrobial surface.

STANDARD FEATURES:

- Unmatched Comfort and Support
- Gradual Edges Will Never Curl
- 99.99% Anti-Microbial
- Non-Slip Top and Bottom Surfaces
- Will Not Separate, Bubble, or Delaminate
- ¾" SmartTech™ Polyurethane Technology
- Perfected and Tested for Over 10 Years
- 10-Year Manufacturer's Warranty
- Proudly Made in the USA

Add your school branding to Smart Step Wellness Mats.

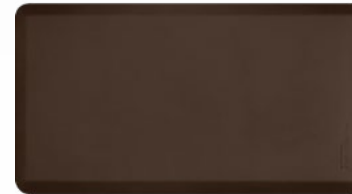
Contact us for a FREE mockup.



Supreme Mat



Mosaic Mat



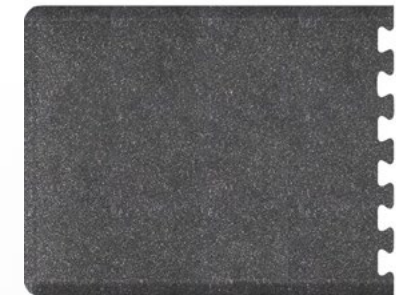
FitnessMat Mat



MobilePro Mat



Puzzle Runner Mat



Puzzle Runner Mosaic Mat

800.743.7738 | TEAMEDGEATHLETICS.COM

VIRTUAL TRADESHOW



Experience the full day of an athletic trainer through our virtual tradeshow.

Experience an organized office, dynamic classroom, fully functional athletic training rooms, practical sideline solutions and finalize your experience in the team locker room. Browse our Athletic Edge Virtual Tradeshow eBook and view the room videos to find out why you should choose The Athletic Edge and how we can help you get started with your project.

- **In the Office**
- **In the Classroom**
- **In the Athletic Training Room**
(Wood and Laminate Products)
- **In the Athletic Training Room**
(Aluma Elite Products)
- **On the Sideline**
- **In the Locker Room**

DID YOU KNOW WE DO ROOM LAYOUTS?

Design matters. Contact us today to bring your vision to life with a room layout.



CHECK OUT OUR RESOURCES AVAILABLE ONLINE

- EBOOKS
- WEBINARS
- AND MORE!



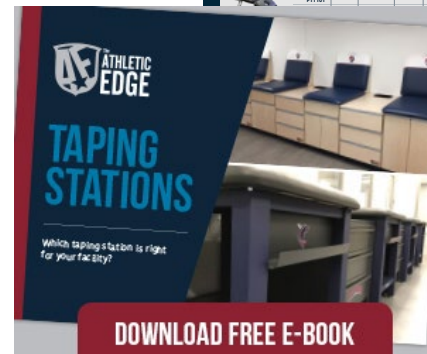
RESOURCES

View our archived webinars or download one of our e-books!



Hi-Lo Treatment Table & Cabinet Comparison Chart

TABLE	Load Capacity	ADA Compliant	Weight Range	ADA Approved	Light Back Option	Light Top Option	Massage Option	Cabinet	Material	5 Year Warranty
PT1101	400	✓	17"-35"	✓	✗	✗	Included	✗	Steel	✓
					Included	✗	Included	✗	Steel	✓
					Included	✗	Included	✗	Steel	✓
					✗	Included	Included	✗	Steel	✓
					✗	Included	Included	✗	Steel	✓
					✗	✗	Included	✗	Steel	✗



WORKSPACE REINVENTED

How you work is just as important as the work you do. REV.247 provides creative products and options to help reinvent your workspace by focusing on how, where, and when you work to optimize your unique work habits. It's all about getting things done.



DESKS

Choose a desk that meets your needs. Rev.247 offers height-adjustable, stationary and mobile office solutions for how you work best.



TABLES

Rev.247 offers contemporary office tables including conference tables, meeting tables, adjustable-height solutions and stationary options to create a polished, professional look and feel to your office space.



SEATING

Our office seating options deliver superior performance plus a modern design for a professional look and feel. Choose from office chairs, visitor chairs, or rolling stools to find the ergonomic solution that balances function, durability and comfort.



ACCESSORIES

Add functional style to your workspace with Rev.247 office accessories. Options like custom logo rugs, wellness mats, whiteboards and office decor customize your space.



MELLETTTE SERIES

The Mellette Series is where prairie charm meets modern elegance. Proudly South Dakota-inspired, this robust line of furniture speaks to our open prairie heritage and strong midwestern values and with its simple wood patterns combined with strong lines for a clean, industrial look. It includes multiple desk options with a side table, multi-functional credenza, open bookshelves, and convenient storage for a touch of prairie elegance.



DEADWOOD SERIES

The Deadwood Series showcases the enhanced natural beauty of weathered grey distressed woodgrain laminate combined with a sturdy, contemporary black welded steel frame. The result is a timeless design that whispers Old West.

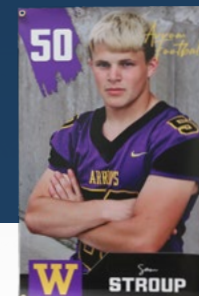
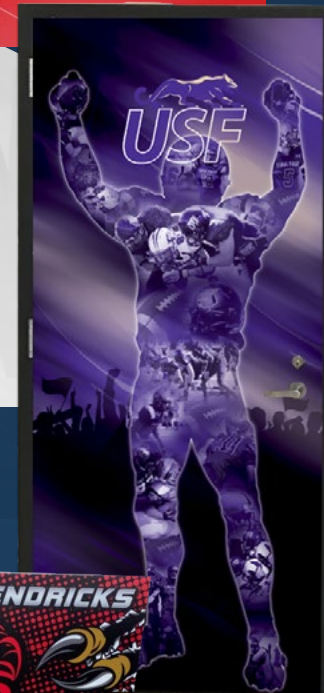
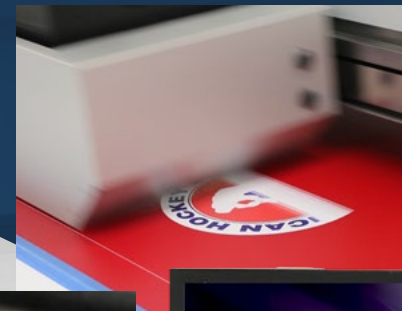




BUILD YOUR BRAND WITH CUSTOM GRAPHICS

Decals, banners, signs and much more! Let our experienced design team bring your project to life. At Pivotal Printing, we utilize state-of-the-art printers for your creations large and small including wall graphics, door wraps and all types of signage with custom branding options.

- Decals
- Bag Tags
- Window Decals
- Retractable Banners
- Tri-Stand Banners
- Scrim Banners
- Foamboards and Stands
- Paper Posters and Banners
- Floor Decals
- Polymetal Signs
- Vehicle Magnets
- Bean Bag Boards
- Wood Prints
- Variable Height Banners and Stands
- Wall Decals
- Nameplates
- Door Wraps
- Corroplast Yard Signs with Stakes
- Canvas Prints
- Customized whiteboards
- Laser Etched Drinkware and Promotional Products



Call for a quote 800.743.7738



intellipick

Simple. Safe. Secure.

Expectation is everything. IntelliPick changes the way people do digital ordering and touchless delivery with no lines and no waiting. The Smart Locker system combines powerful smart technology with intelligent order retrieval to ensure a quality customer experience. What you get is a simple, safe, and secure exchange of goods. Choose between four, six and eight compartments to suit your needs.

Why Choose IntelliPick Smart Lockers?

This changes everything. The future of intelligent order retrieval has arrived. IntelliPick brings together convenience and a healthier way to impact the customer experience with powerful, smart technology for a simple, safe, and secure exchange. Smart Lockers change the way people do express takeout and touchless delivery. Get in and out with no waiting and no hassle, empower your customer with a healthier choice with contactless pickup to ensure food safety, quality, and freshness, and enjoy reliable service that gives peace of mind to both the customer and business so you can focus on the most important thing: serving customers.



SIMPLE

SAFE

SECURE



IP400-22
44"W x 22"D x 48"H



IP600-22
44"W x 22"D x 66"H



IP800-22
44"W x 22"D x 84"H



IP601-22
63.25"W x 22"D x 48"H



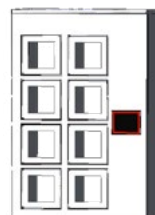
IP801-22
82.5"W x 22"D x 48"H



IP400T-22
56"W x 22"D x 48"H



IP600T-22
56"W x 22"D x 66"H



IP800T-22
56"W x 22"D x 84"H



IP601T-22
75.25"W x 22"D x 48"H



IP801T-22
94.5"W x 22"D x 48"H

COLORS AND BRANDING



Logo Slip Cover

(LOGO COVER) The logo slip cover is a cost effective, removable cover that slips over the lift back/tilt cushion of your table, cabinet, or taping station. Logo slip covers are also easy to replace if your school or organization updates logos or colors.



Debossed Logo

(LOGO DB) The debossed logo is a popular branding option that creates a classic look in any space. There is a one time fee for the metal die used to deboss the logo, which can be used on future Athletic Edge equipment orders.

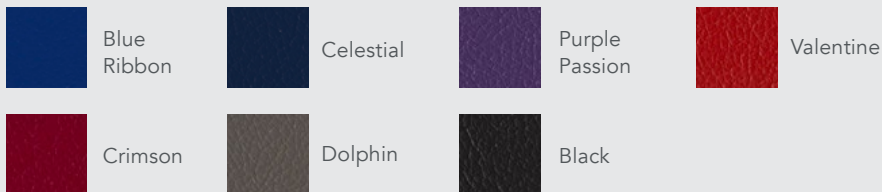


Color Edge Print Logo

(LOGO CP) The Color Edge Print logo is printed directly onto your upholstered cushion, and there are no limits on the number of colors printed in your logo.

Color Edge Print Upholstery Colors

7 standard upholstery colors for athletic training room equipment.



Upholstery Colors

13 standard upholstery colors for athletic training room equipment.



Laminate, Wood & Stain

8 standard laminate, 2 standard wood, and 7 standard stain options for athletic training room equipment.

Laminate:



Wood:



Custom Stain:



Powder Coat Colors

15 available powder coat colors for all LAST tables, Thera-P tables, SmartCarts and Aluma Elite equipment.



FROM THE ATHLETIC TRAINING ROOM TO THE LOCKER ROOM

Our lockers are specifically tailored to fit your space, style and storage needs.

Choose which high-quality materials, cutting-edge features and custom-branding options to include and we will bring your locker vision to reality.



AELockers.com



The foundation for your Athletic Facility needs.

